

HHEX antibody - middle region
Rabbit Polyclonal Antibody
Catalog # AI10016**Specification**

HHEX antibody - middle region - Product Information

Application	WB, IHC
Primary Accession	Q03014
Other Accession	Q03014 , NP_002720 , NM_002729
Reactivity	Human, Mouse, Rat, Pig, Dog, Guinea Pig, Horse, Bovine
Predicted	Human, Mouse, Rat, Pig, Dog, Guinea Pig, Bovine
Host	Rabbit
Clonality	Polyclonal
Calculated MW	30 kDa KDa

HHEX antibody - middle region - Additional Information**Gene ID** 3087**Alias Symbol** HEX, PRH, HMPH, PRHX, HOX11L-PEN**Other Names**

Hematopoietically-expressed homeobox protein HHEX, Homeobox protein HEX, Homeobox protein PRH, HHEX, HEX, PRH, PRHX

Target/Specificity

HHEX encodes a member of the homeobox family of transcription factors, many of which are involved in developmental processes. Expression in specific hematopoietic lineages suggests that this protein may play a role in hematopoietic differentiation.

Format

Liquid. Purified antibody supplied in 1x PBS buffer with 0.09% (w/v) sodium azide and 2% sucrose.

Reconstitution & Storage

Add 50 ul of distilled water. Final anti-HHEX antibody concentration is 1 mg/ml in PBS buffer with 2% sucrose. For longer periods of storage, store at -20°C. Avoid repeat freeze-thaw cycles.

Precautions

HHEX antibody - middle region is for research use only and not for use in diagnostic or therapeutic procedures.

HHEX antibody - middle region - Protein Information**Name** HHEX**Synonyms** HEX, PRH, PRHX

Function

Recognizes the DNA sequence 5'-ATTAA-3' (By similarity). Transcriptional repressor (By similarity). Activator of WNT-mediated transcription in conjunction with CTNNB1 (PubMed:20028982). Establishes anterior identity at two levels; acts early to enhance canonical WNT- signaling by repressing expression of TLE4, and acts later to inhibit NODAL-signaling by directly targeting NODAL (By similarity). Inhibits EIF4E-mediated mRNA nuclear export (PubMed:12554669). May play a role in hematopoietic differentiation (PubMed:8096636).

Cellular Location

Nucleus {ECO:0000250|UniProtKB:P43120}. Nucleus, nuclear body. Cytoplasm

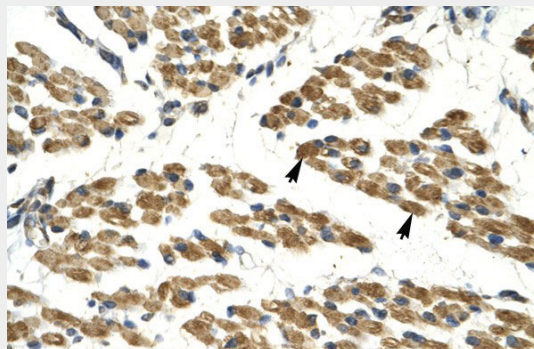
Tissue Location

Liver and promyelocytic leukemia cell line HL-60.

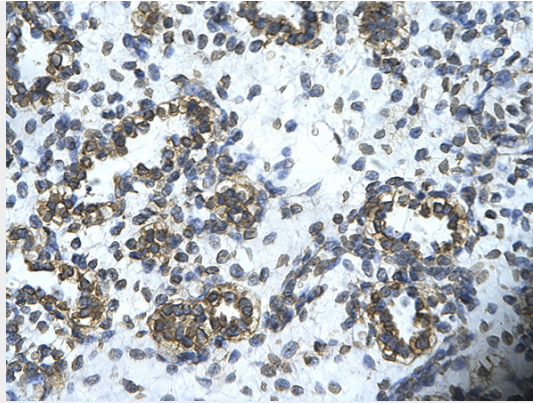
HHEX antibody - middle region - Protocols

Provided below are standard protocols that you may find useful for product applications.

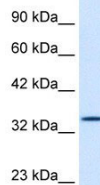
- [Western Blot](#)
- [Blocking Peptides](#)
- [Dot Blot](#)
- [Immunohistochemistry](#)
- [Immunofluorescence](#)
- [Immunoprecipitation](#)
- [Flow Cytometry](#)
- [Cell Culture](#)

HHEX antibody - middle region - Images

HHEX antibody - middle region (AI10016) in Human Muscle cells using Immunohistochemistry
HumanMuscle



Human Lung
Rabbit Anti-HHEX Antibody
Paraffin Embedded Tissue: Human alveolar cell
Cellular Data: Epithelial cells of renal tubule
Antibody Concentration: 4.0-8.0 µg/ml
Magnification: 400X



HHEX antibody - middle region (AI10016) in Human K562 cells using Western Blot
WB Suggested Anti-HHEX Antibody Titration: 0.2-1 µg/ml
ELISA Titer: 1:312500
Positive Control: K562 cell lysate
HHEX is strongly supported by BioGPS gene expression data to be expressed in Human K562 cells

HHEX antibody - middle region - Background

This is a rabbit polyclonal antibody against HHEX. It was validated on Western Blot and immunohistochemistry by Abgent. At Abgent we manufacture rabbit polyclonal antibodies on a large scale (200-1000 products/month) of high throughput manner. Our antibodies are peptide based and protein family oriented. We usually provide antibodies covering each member of a whole protein family of your interest. We also use our best efforts to provide you antibodies recognize various epitopes of a target protein. For availability of antibody needed for your experiment, please inquire (sales@abgent.com).