

**TSFM antibody - middle region**  
**Rabbit Polyclonal Antibody**  
**Catalog # AI10017****Specification**

---

**TSFM antibody - middle region - Product Information**

Application	WB
Primary Accession	<a href="#">P43897</a>
Other Accession	<a href="#">P43897</a> , <a href="#">NP_005717</a> , <a href="#">NM_005726</a>
Reactivity	Human, Mouse, Rat, Rabbit, Guinea Pig, Bovine
Predicted	Human, Mouse, Rabbit, Guinea Pig
Host	Rabbit
Clonality	Polyclonal
Calculated MW	38 kDa KDa

**TSFM antibody - middle region - Additional Information****Gene ID** 10102

Alias Symbol	COXPD3, EF-TS, EF-Tsmt, EFTS, EFTSMT
Other Names	
Elongation factor Ts, mitochondrial {ECO:0000255 HAMAP-Rule:MF_03135}, EF-Ts {ECO:0000255 HAMAP-Rule:MF_03135}, EF-TsMt {ECO:0000255 HAMAP-Rule:MF_03135}, TSFM {ECO:0000255 HAMAP-Rule:MF_03135}	

**Target/Specificity**

The TSFM protein is a mitochondrial translation elongation factor. Synthesis of the 13 mitochondrial-encoded proteins occurs on a dedicated mitochondrial translation apparatus similar to that found in prokaryotes and requires, in addition to the tRNAs and rRNAs encoded in mtDNA, the concerted action of several translation factors and a large number of mitochondrial ribosomal proteins, all of which are encoded by nuclear genes. Synthesis of the 13 mitochondrial-encoded proteins occurs on a dedicated mitochondrial translation apparatus similar to that found in prokaryotes and requires, in addition to the tRNAs and rRNAs encoded in mtDNA, the concerted action of several translation factors and a large number of mitochondrial ribosomal proteins, all of which are encoded by nuclear genes. The TSFM gene encodes a mitochondrial translation elongation factor (Smeitink et al., 2006 [PubMed 17033963]). [supplied by OMIM].

**Format**

Liquid. Purified antibody supplied in 1x PBS buffer with 0.09% (w/v) sodium azide and 2% sucrose.

**Reconstitution & Storage**

Add 50 ul of distilled water. Final anti-TSFM antibody concentration is 1 mg/ml in PBS buffer with 2% sucrose. For longer periods of storage, store at -20°C. Avoid repeat freeze-thaw cycles.

**Precautions**

TSFM antibody - middle region is for research use only and not for use in diagnostic or therapeutic procedures.

## TSFM antibody - middle region - Protein Information

**Name** TSFM {ECO:0000255|HAMAP-Rule:MF\_03135}

### Function

Associates with the EF-Tu.GDP complex and induces the exchange of GDP to GTP. It remains bound to the aminoacyl-tRNA.EF- Tu.GTP complex up to the GTP hydrolysis stage on the ribosome.

### Cellular Location

Mitochondrion.

### Tissue Location

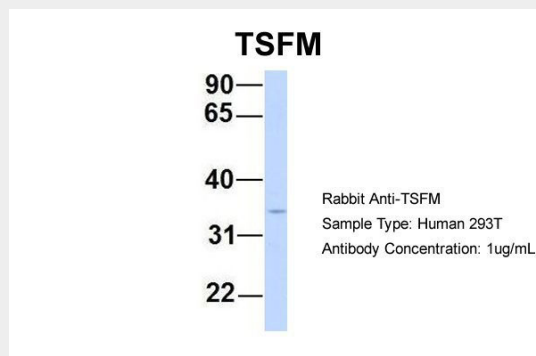
Expressed in all tissues, with the highest levels of expression in skeletal muscle, liver and kidney

## TSFM antibody - middle region - Protocols

Provided below are standard protocols that you may find useful for product applications.

- [Western Blot](#)
- [Blocking Peptides](#)
- [Dot Blot](#)
- [Immunohistochemistry](#)
- [Immunofluorescence](#)
- [Immunoprecipitation](#)
- [Flow Cytometry](#)
- [Cell Culture](#)

## TSFM antibody - middle region - Images



TSFM antibody - middle region (AI10017) in Human 293T cells using Western Blot

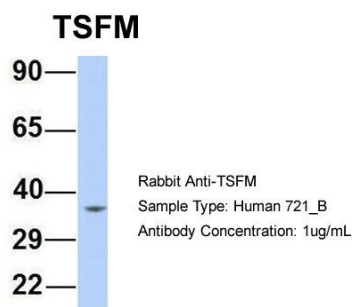
Host:Rabbit

Target Name:TSFM

Sample Tissue:Human 293T

Antibody Dilution: 1.0µg/ml

There is BioGPS gene expression data showing that TSFM is expressed in HEK293T



TSFM antibody - middle region (AI10017) in Human 721\_B cells using Western Blot

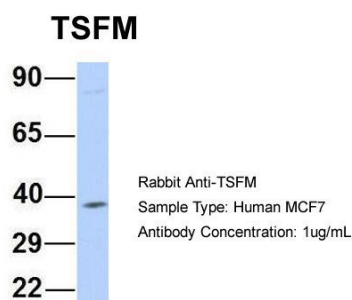
Host:Rabbit

Target Name:TSFM

Sample Tissue:Human 721\_B

Antibody Dilution: 1.0µg/ml

TSFM is strongly supported by BioGPS gene expression data to be expressed in Human 721\_B cells



TSFM antibody - middle region (AI10017) in Human MCF7 cells using Western Blot

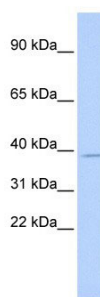
Host:Rabbit

Target Name:TSFM

Sample Tissue:Human MCF7

Antibody Dilution: 1.0µg/ml

TSFM is strongly supported by BioGPS gene expression data to be expressed in MCF7



TSFM antibody - middle region (AI10017) in Human HeLa cells using Western Blot

WB Suggested Anti-TSFM Antibody Titration: 0.2-1 µg/ml

ELISA Titer: 1:312500

Positive Control: Hela cell lysate

.TSFM is strongly supported by BioGPS gene expression data to be expressed in HeLa

**TSFM antibody - middle region - Background**

This is a rabbit polyclonal antibody against TSFM. It was validated on Western Blot using a cell lysate as a positive control. Abgent strives to provide antibodies covering each member of a whole protein family of your interest. We also use our best efforts to provide you antibodies recognize various epitopes of a target protein. For availability of antibody needed for your experiment, please inquire ([sales@abgent.com](mailto:sales@abgent.com)).