

TBR1 antibody - middle region
Rabbit Polyclonal Antibody
Catalog # AI10019**Specification**

TBR1 antibody - middle region - Product Information

Application	WB
Primary Accession	Q16650
Other Accession	Q16650 , NP_006584 , NM_006593
Reactivity	Human, Mouse, Pig, Dog, Bovine
Predicted	Human, Mouse, Rat, Pig, Dog, Bovine
Host	Rabbit
Clonality	Polyclonal
Calculated MW	74 kDa KDa

TBR1 antibody - middle region - Additional Information**Gene ID** 10716**Alias Symbol** MGC141978, TES-56, TBR-1**Other Names**

T-box brain protein 1, T-brain-1, TBR-1, TES-56, TBR1

Target/Specificity

This gene is a member of a conserved family of genes that share a common DNA-binding domain, the T-box. T-box genes encode transcription factors involved in the regulation of developmental processes. A similar protein has been disrupted in mice and shown to be critical for early cortical development, and causes loss of projection neurons in the olfactory bulbs and olfactory cortex. The C-terminal region this similar protein was found to be necessary and sufficient for association with the guanylate kinase domain of calcium/calmodulin-dependent serine protein kinase. This gene is a member of a conserved family of genes that share a common DNA-binding domain, the T-box. T-box genes encode transcription factors involved in the regulation of developmental processes. A similar protein has been disrupted in mice and shown to be critical for early cortical development, and causes loss of projection neurons in the olfactory bulbs and olfactory cortex. The C-terminal region this similar protein was found to be necessary and sufficient for association with the guanylate kinase domain of calcium/calmodulin-dependent serine protein kinase.

Format

Liquid. Purified antibody supplied in 1x PBS buffer with 0.09% (w/v) sodium azide and 2% sucrose.

Reconstitution & Storage

Add 50 ul of distilled water. Final anti-TBR1 antibody concentration is 1 mg/ml in PBS buffer with 2% sucrose. For longer periods of storage, store at -20°C. Avoid repeat freeze-thaw cycles.

Precautions

TBR1 antibody - middle region is for research use only and not for use in diagnostic or therapeutic procedures.

TBR1 antibody - middle region - Protein Information

Name TBR1**Function**

Transcriptional repressor involved in multiple aspects of cortical development, including neuronal migration, laminar and areal identity, and axonal projection (PubMed:25232744, PubMed:30250039). As transcriptional repressor of FEZF2, it blocks the formation of the corticospinal (CS) tract from layer 6 projection neurons, thereby restricting the origin of CS axons specifically to layer 5 neurons (By similarity).

Cellular Location

Nucleus

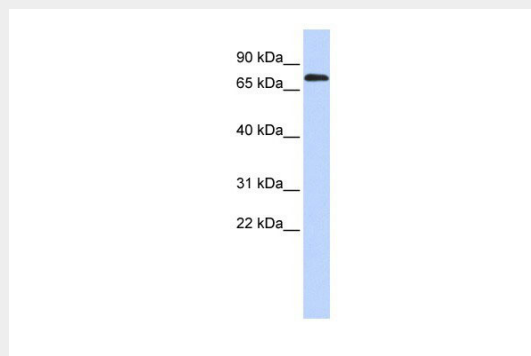
Tissue Location

Brain.

TBR1 antibody - middle region - Protocols

Provided below are standard protocols that you may find useful for product applications.

- [Western Blot](#)
- [Blocking Peptides](#)
- [Dot Blot](#)
- [Immunohistochemistry](#)
- [Immunofluorescence](#)
- [Immunoprecipitation](#)
- [Flow Cytometry](#)
- [Cell Culture](#)

TBR1 antibody - middle region - Images

TBR1 antibody - middle region (AI10019) in Human Brain cells using Western Blot
WB Suggested Anti-TBR1 Antibody Titration: 0.2-1 µg/ml
ELISA Titer: 1:62500
Positive Control: Human brain

TBR1 antibody - middle region - Background

This is a rabbit polyclonal antibody against TBR1. It was validated on Western Blot using a cell lysate as a positive control. Abgent strives to provide antibodies covering each member of a whole protein family of your interest. We also use our best efforts to provide you antibodies recognize

various epitopes of a target protein. For availability of antibody needed for your experiment, please inquire (sales@abgent.com).