

DLX5 antibody - N-terminal region
Rabbit Polyclonal Antibody
Catalog # AI10025**Specification**

DLX5 antibody - N-terminal region - Product Information

Application	WB
Primary Accession	P56178
Other Accession	P56178 , NP_005212 , NM_005221
Reactivity	Human, Mouse, Rat, Rabbit, Zebrafish, Pig, Dog, Guinea Pig, Horse, Bovine
Predicted	Human, Mouse, Rat, Rabbit, Pig, Dog, Bovine
Host	Rabbit
Clonality	Polyclonal
Calculated MW	32 kDa KDa

DLX5 antibody - N-terminal region - Additional Information**Gene ID 1749**

Alias Symbol	SHFM1D
Other Names	
Homeobox protein DLX-5, DLX5	

Target/Specificity

DLX5 is a member of a homeobox transcription factor gene family similar to the Drosophila distal-less gene. This protein may play a role in bone development and fracture healing. Mutation in its gene, which is located in a tail-to-tail configuration with another member of the family on the long arm of chromosome 7, may be associated with split-hand/split-foot malformation. This gene encodes a member of a homeobox transcription factor gene family similar to the Drosophila distal-less gene. The encoded protein may play a role in bone development and fracture healing. Mutation in this gene, which is located in a tail-to-tail configuration with another member of the family on the long arm of chromosome 7, may be associated with split-hand/split-foot malformation. Publication Note: This RefSeq record includes a subset of the publications that are available for this gene. Please see the Entrez Gene record to access additional publications.

Format

Liquid. Purified antibody supplied in 1x PBS buffer with 0.09% (w/v) sodium azide and 2% sucrose.

Reconstitution & Storage

Add 50 ul of distilled water. Final anti-DLX5 antibody concentration is 1 mg/ml in PBS buffer with 2% sucrose. For longer periods of storage, store at -20°C. Avoid repeat freeze-thaw cycles.

Precautions

DLX5 antibody - N-terminal region is for research use only and not for use in diagnostic or therapeutic procedures.

DLX5 antibody - N-terminal region - Protein Information

Name DLX5**Function**

Transcriptional factor involved in bone development. Acts as an immediate early BMP-responsive transcriptional activator essential for osteoblast differentiation. Stimulates ALPL promoter activity in a RUNX2-independent manner during osteoblast differentiation. Stimulates SP7 promoter activity during osteoblast differentiation. Promotes cell proliferation by up-regulating MYC promoter activity. Involved as a positive regulator of both chondrogenesis and chondrocyte hypertrophy in the endochondral skeleton. Binds to the homeodomain-response element of the ALPL and SP7 promoter. Binds to the MYC promoter. Requires the 5'-TAATTA-3' consensus sequence for DNA-binding.

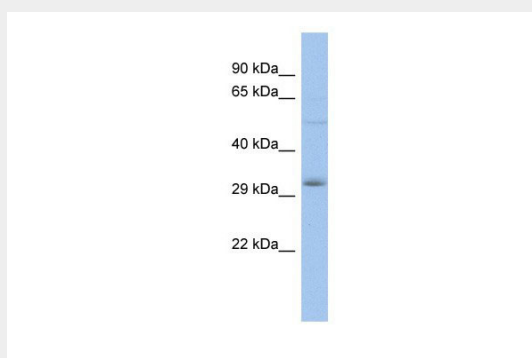
Cellular Location

Nucleus {ECO:0000255|PROSITE-ProRule:PRU00108}.

DLX5 antibody - N-terminal region - Protocols

Provided below are standard protocols that you may find useful for product applications.

- [Western Blot](#)
- [Blocking Peptides](#)
- [Dot Blot](#)
- [Immunohistochemistry](#)
- [Immunofluorescence](#)
- [Immunoprecipitation](#)
- [Flow Cytometry](#)
- [Cell Culture](#)

DLX5 antibody - N-terminal region - Images

DLX5 antibody - N-terminal region (AI10025) in Human THP-1 cells using Western Blot

WB Suggested Anti-DLX5 Antibody Titration: 0.2-1 µg/ml

ELISA Titer: 1:312500

Positive Control: THP-1 cell lysate

DLX5 antibody - N-terminal region - Background

This is a rabbit polyclonal antibody against DLX5. It was validated on Western Blot using a cell lysate as a positive control. Abgent strives to provide antibodies covering each member of a whole protein family of your interest. We also use our best efforts to provide you antibodies recognize various epitopes of a target protein. For availability of antibody needed for your experiment, please

inquire (sales@abgent.com).