

ELF2 antibody - N-terminal region
Rabbit Polyclonal Antibody
Catalog # AI10026**Specification**

ELF2 antibody - N-terminal region - Product Information

Application	WB
Primary Accession	Q15723
Other Accession	Q15723-3 , NP_006865 , NM_006874
Reactivity	Human, Mouse, Rat, Rabbit, Dog, Guinea Pig, Horse, Bovine
Predicted	Human, Mouse, Rat, Rabbit, Chicken, Dog, Guinea Pig, Horse, Bovine
Host	Rabbit
Clonality	Polyclonal
Calculated MW	57 kDa KDa

ELF2 antibody - N-terminal region - Additional Information**Gene ID** 1998

Alias Symbol **EU32, NERF, NERF-2, NERF-1A, NERF-1B, NERF-1a,b**

Other Names

ETS-related transcription factor Elf-2, E74-like factor 2, New ETS-related factor, ELF2
{ECO:0000312|EMBL:AAF671951}

Target/Specificity

The ELF2 gene encodes a protein that physically interacts with AML1 and mediates opposing effects on AML1-mediated transcription of the B cell-specific blk gene.

Format

Liquid. Purified antibody supplied in 1x PBS buffer with 0.09% (w/v) sodium azide and 2% sucrose.

Reconstitution & Storage

Add 50 ul of distilled water. Final anti-ELF2 antibody concentration is 1 mg/ml in PBS buffer with 2% sucrose. For longer periods of storage, store at -20°C. Avoid repeat freeze-thaw cycles.

Precautions

ELF2 antibody - N-terminal region is for research use only and not for use in diagnostic or therapeutic procedures.

ELF2 antibody - N-terminal region - Protein Information

Name ELF2 {ECO:0000312|EMBL:AAF67195.1}

Function

Isoform 1 transcriptionally activates the LYN and BLK promoters and acts synergistically with

RUNX1 to transactivate the BLK promoter.

Cellular Location

Nucleus.

Tissue Location

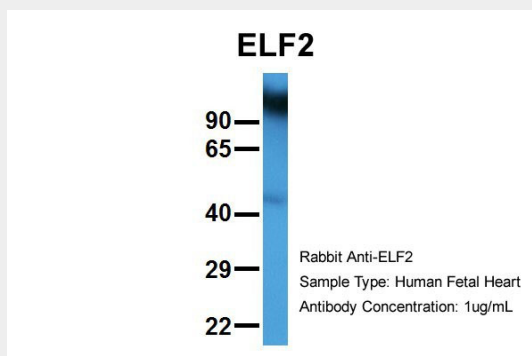
Expressed in all fetal and adult tissues examined. Among fetal tissues, highest levels of expression detected in heart, lung, liver and kidney, and lower levels in brain. Among adult tissues, highest levels of expression detected in heart, placenta, lung, skeletal muscle, spleen, thymus, testis and ovary. Moderate expression in prostate, small intestine, kidney, liver and pancreas, and weak expression in colon, brain and peripheral blood lymphocytes

ELF2 antibody - N-terminal region - Protocols

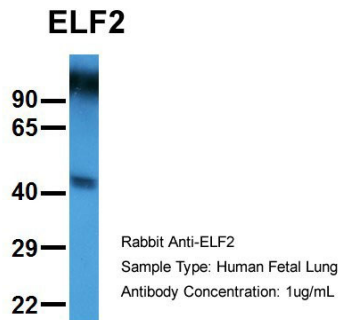
Provided below are standard protocols that you may find useful for product applications.

- [Western Blot](#)
- [Blocking Peptides](#)
- [Dot Blot](#)
- [Immunohistochemistry](#)
- [Immunofluorescence](#)
- [Immunoprecipitation](#)
- [Flow Cytometry](#)
- [Cell Culture](#)

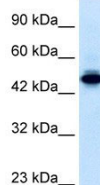
ELF2 antibody - N-terminal region - Images



ELF2 antibody - N-terminal region (AI10026) in Hum. Fetal Heart cells using Western Blot
Host: Rabbit
Target Name: ELF2
Sample Tissue: Human Fetal Heart
Antibody Dilution: 1.0µg/ml



ELF2 antibody - N-terminal region (AI10026) in Hum. Fetal Lung cells using Western Blot
Host: Rabbit
Target Name: ELF2
Sample Tissue: Human Fetal Lung
Antibody Dilution: 1.0µg/ml



ELF2 antibody - N-terminal region (AI10026) in Human Jurkat cells using Western Blot
WB Suggested Anti-ELF2 Antibody Titration: 0.2-1 µg/ml
ELISA Titer: 1:12500
Positive Control: Jurkat cell lysate

ELF2 antibody - N-terminal region - Background

This is a rabbit polyclonal antibody against ELF2. It was validated on Western Blot using a cell lysate as a positive control. Abgent strives to provide antibodies covering each member of a whole protein family of your interest. We also use our best efforts to provide you antibodies recognize various epitopes of a target protein. For availability of antibody needed for your experiment, please inquire (sales@abgent.com).