

SCMH1 antibody - middle region
Rabbit Polyclonal Antibody
Catalog # AI10028**Specification**

SCMH1 antibody - middle region - Product Information

Application	WB
Primary Accession	Q96GD3
Other Accession	Q96GD3-4 , NP_036368 , NM_012236
Reactivity	Human, Mouse, Rat, Rabbit, Dog, Horse, Bovine, Yeast
Predicted	Human, Mouse, Rat, Rabbit, Chicken, Dog, Horse, Bovine
Host	Rabbit
Clonality	Polyclonal
Calculated MW	65 kDa KDa

SCMH1 antibody - middle region - Additional Information**Gene ID** 22955

Alias Symbol	Scml3
--------------	--------------

Other Names
Polycomb protein SCMH1, Sex comb on midleg homolog 1, SCMH1
{ECO:0000312|EMBL:CAH727931}

Target/Specificity

SCMH1 is a component of the Polycomb group (PcG) multiprotein PRC1 complex, a complex required to maintain the transcriptionally repressive state of many genes, including Hox genes, throughout development. PcG PRC1 complex acts via chromatin remodeling and modification of histones, it mediates monoubiquitination of histone H2A 'Lys-119', rendering chromatin heritably changed in its expressibility.

Format

Liquid. Purified antibody supplied in 1x PBS buffer with 0.09% (w/v) sodium azide and 2% sucrose.

Reconstitution & Storage

Add 50 ul of distilled water. Final anti-SCMH1 antibody concentration is 1 mg/ml in PBS buffer with 2% sucrose. For longer periods of storage, store at -20°C. Avoid repeat freeze-thaw cycles.

Precautions

SCMH1 antibody - middle region is for research use only and not for use in diagnostic or therapeutic procedures.

SCMH1 antibody - middle region - Protein Information**Name** SCMH1 {ECO:0000312|EMBL:CAH72793.1}

Function

Associates with Polycomb group (PcG) multiprotein complexes; the complex class is required to maintain the transcriptionally repressive state of some genes.

Cellular Location

Nucleus.

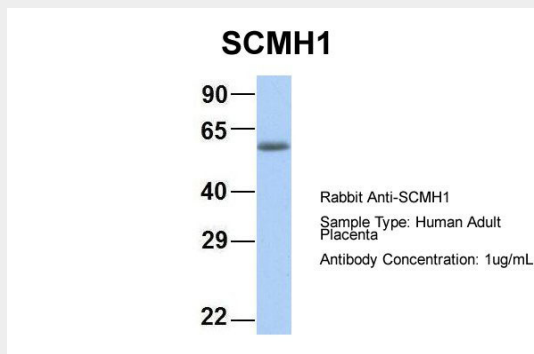
Tissue Location

Strongly expressed in heart, muscle and pancreas. Weakly expressed in brain, placenta, lung, liver and kidney

SCMH1 antibody - middle region - Protocols

Provided below are standard protocols that you may find useful for product applications.

- [Western Blot](#)
- [Blocking Peptides](#)
- [Dot Blot](#)
- [Immunohistochemistry](#)
- [Immunofluorescence](#)
- [Immunoprecipitation](#)
- [Flow Cytometry](#)
- [Cell Culture](#)

SCMH1 antibody - middle region - Images

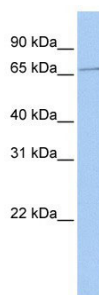
SCMH1 antibody - middle region (AI10028) in Hum. Adult Placenta cells using Western Blot

Host: Rabbit

Target Name: CHAD

Sample Tissue: Human Adult Placenta

Antibody Dilution: 1.0µg/ml



SCMH1 antibody - middle region (AI10028) in Human MCF-7 cells using Western Blot
WB Suggested Anti-SCMH1 Antibody Titration: 0.2-1 µg/ml
ELISA Titer: 1:62500
Positive Control: MCF7 cell lysate

SCMH1 antibody - middle region - Background

This is a rabbit polyclonal antibody against SCM1. It was validated on Western Blot using a cell lysate as a positive control. Abgent strives to provide antibodies covering each member of a whole protein family of your interest. We also use our best efforts to provide you antibodies recognize various epitopes of a target protein. For availability of antibody needed for your experiment, please inquire (sales@abgent.com).