

GTF3C2 antibody - middle region
Rabbit Polyclonal Antibody
Catalog # AI10034**Specification**

GTF3C2 antibody - middle region - Product Information

Application	WB
Primary Accession	O8WUA4
Other Accession	O8WUA4 , NP_001512 , NM_001521
Reactivity	Human, Mouse, Rat, Rabbit, Dog, Guinea Pig, Horse, Bovine
Predicted	Human, Rabbit, Dog, Guinea Pig, Horse, Bovine
Host	Rabbit
Clonality	Polyclonal
Calculated MW	101 kDa KDa

GTF3C2 antibody - middle region - Additional Information**Gene ID 2976**

Alias Symbol **KIAA0011, TFIIC-BETA, TFIIC110**

Other Names

General transcription factor 3C polypeptide 2, TF3C-beta, Transcription factor IIC 110 kDa subunit, TFIIC 110 kDa subunit, TFIIC110, Transcription factor IIC subunit beta, GTF3C2, KIAA0011

Target/Specificity

GTF3C2 is required for RNA polymerase III-mediated transcription. GTF3C2 is a component of TFIIC that initiates transcription complex assembly on tRNA and is required for transcription of 5S rRNA and other stable nuclear and cytoplasmic RNAs. GTF3C2 may play a direct role in stabilizing interactions of TFIIC2 with TFIIC1.

Format

Liquid. Purified antibody supplied in 1x PBS buffer with 0.09% (w/v) sodium azide and 2% sucrose.

Reconstitution & Storage

Add 50 ul of distilled water. Final anti-GTF3C2 antibody concentration is 1 mg/ml in PBS buffer with 2% sucrose. For longer periods of storage, store at -20°C. Avoid repeat freeze-thaw cycles.

Precautions

GTF3C2 antibody - middle region is for research use only and not for use in diagnostic or therapeutic procedures.

GTF3C2 antibody - middle region - Protein Information

Name GTF3C2

Synonyms KIAA0011

Function

Required for RNA polymerase III-mediated transcription. Component of TFIIC that initiates transcription complex assembly on tRNA and is required for transcription of 5S rRNA and other stable nuclear and cytoplasmic RNAs. May play a direct role in stabilizing interactions of TFIIC2 with TFIIC1.

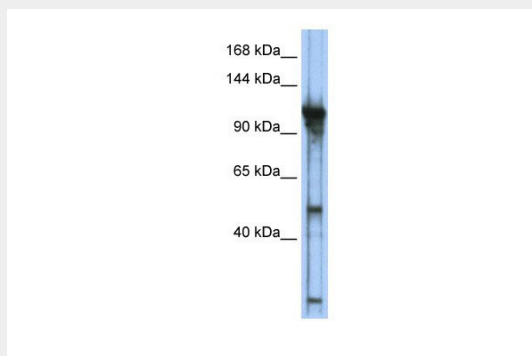
Cellular Location

Nucleus.

GTF3C2 antibody - middle region - Protocols

Provided below are standard protocols that you may find useful for product applications.

- [Western Blot](#)
- [Blocking Peptides](#)
- [Dot Blot](#)
- [Immunohistochemistry](#)
- [Immunofluorescence](#)
- [Immunoprecipitation](#)
- [Flow Cytometry](#)
- [Cell Culture](#)

GTF3C2 antibody - middle region - Images

GTF3C2 antibody - middle region (AI10034) in r-GTF3C2 cells using Western Blot

WB Suggested Anti-GTF3C2 Antibody Titration: 0.2-1 µg/ml

ELISA Titer: 1:12500

Positive Control: Transfected 293T

GTF3C2 antibody - middle region - Background

This is a rabbit polyclonal antibody against GTF3C2. It was validated on Western Blot using a cell lysate as a positive control. Abgent strives to provide antibodies covering each member of a whole protein family of your interest. We also use our best efforts to provide you antibodies recognize various epitopes of a target protein. For availability of antibody needed for your experiment, please inquire (sales@abgent.com).