

**GRHL1 antibody - N-terminal region**  
**Rabbit Polyclonal Antibody**  
**Catalog # AI10035****Specification**

---

**GRHL1 antibody - N-terminal region - Product Information**

Application	WB
Primary Accession	<a href="#">O9NZI5</a>
Other Accession	<a href="#">O9NZI5</a> , <a href="#">NP_055367</a> , <a href="#">NM_014552</a>
Reactivity	Human, Mouse, Rat, Pig, Dog, Horse, Bovine
Predicted Host	Human, Mouse, Rat, Dog, Horse, Bovine
Clonality	Rabbit
Calculated MW	Polyclonal 70 kDa KDa

**GRHL1 antibody - N-terminal region - Additional Information****Gene ID** 29841**Alias Symbol** **LBP-32, LBP32, MGR, TFCP2L2, NH32**  
**Other Names**

Grainyhead-like protein 1 homolog, Mammalian grainyhead, NH32, Transcription factor CP2-like 2, Transcription factor LBP-32, GRHL1, LBP32, MGR, TFCP2L2

**Target/Specificity**

GRHL1 is a member of the grainyhead family of transcription factors. GRHL1 interacts with sister of mammalian grainyhead (SOM) and may function as a transcription factor during development. Two transcript variants encoding distinct isoforms have been identified for GRHL1. This gene encodes a member of the grainyhead family of transcription factors. The encoded protein interacts with sister of mammalian grainyhead (SOM) and may function as a transcription factor during development. Two transcript variants encoding distinct isoforms have been identified for this gene.

**Format**

Liquid. Purified antibody supplied in 1x PBS buffer with 0.09% (w/v) sodium azide and 2% sucrose.

**Reconstitution & Storage**

Add 50 ul of distilled water. Final anti-GRHL1 antibody concentration is 1 mg/ml in PBS buffer with 2% sucrose. For longer periods of storage, store at -20°C. Avoid repeat freeze-thaw cycles.

**Precautions**

GRHL1 antibody - N-terminal region is for research use only and not for use in diagnostic or therapeutic procedures.

**GRHL1 antibody - N-terminal region - Protein Information****Name** GRHL1 ([HGNC:17923](#))

**Function**

Transcription factor involved in epithelial development. Binds directly to the consensus DNA sequence 5'-AACCGGTT-3' (PubMed:<a href="http://www.uniprot.org/citations/12175488" target="\_blank">12175488</a>, PubMed:<a href="http://www.uniprot.org/citations/18288204" target="\_blank">18288204</a>, PubMed:<a href="http://www.uniprot.org/citations/29309642" target="\_blank">29309642</a>). Important regulator of DSG1 in the context of hair anchorage and epidermal differentiation, participates in the maintenance of the skin barrier. There is no genetic interaction with GRHL3, nor functional cooperativity due to diverse target gene selectivity during epithelia development (By similarity). May play a role in regulating glucose homeostasis and insulin signaling.

**Cellular Location**

Nucleus

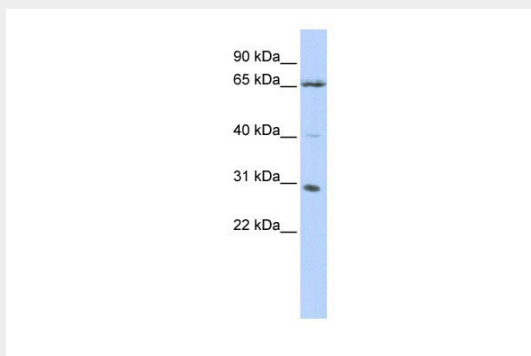
**Tissue Location**

Isoform 1 is highly expressed in brain, pancreas, tonsil, placenta and kidney. Isoform 2 is highly expressed in brain and liver. Expressed at very low levels in non-steroidogenic cells

**GRHL1 antibody - N-terminal region - Protocols**

Provided below are standard protocols that you may find useful for product applications.

- [Western Blot](#)
- [Blocking Peptides](#)
- [Dot Blot](#)
- [Immunohistochemistry](#)
- [Immunofluorescence](#)
- [Immunoprecipitation](#)
- [Flow Cytometry](#)
- [Cell Culture](#)

**GRHL1 antibody - N-terminal region - Images**

GRHL1 antibody - N-terminal region (AI10035) in Human Jurkat cells using Western Blot  
WB Suggested Anti-GRHL1 Antibody Titration: 0.2-1 µg/ml  
ELISA Titer: 1:62500  
Positive Control: Jurkat cell lysate

**GRHL1 antibody - N-terminal region - Background**

This is a rabbit polyclonal antibody against GRHL1. It was validated on Western Blot using a cell lysate as a positive control. Abgent strives to provide antibodies covering each member of a whole

protein family of your interest. We also use our best efforts to provide you antibodies recognize various epitopes of a target protein. For availability of antibody needed for your experiment, please inquire ([sales@abgent.com](mailto:sales@abgent.com)).