

**EWSR1 Antibody - C-terminal region**  
**Rabbit Polyclonal Antibody**  
**Catalog # AI10045****Specification**

---

**EWSR1 Antibody - C-terminal region - Product Information**

Application	WB
Primary Accession	<a href="#">Q01844</a>
Other Accession	<a href="#">Q01844-4</a>
Reactivity	Human, Mouse, Rat, Rabbit, Zebrafish, Pig, Dog, Guinea Pig, Horse, Bovine
Predicted	Human, Mouse, Rat, Rabbit, Zebrafish, Pig, Dog, Guinea Pig, Horse, Bovine
Host	Rabbit
Clonality	Polyclonal
Calculated MW	38 kDa KDa

**EWSR1 Antibody - C-terminal region - Additional Information****Gene ID** 2130**Other Names**

RNA-binding protein EWS, EWS oncogene, Ewing sarcoma breakpoint region 1 protein, EWSR1, EWS

**Target/Specificity**

EWSR1 is a putative RNA binding protein. Mutations in this gene, specifically a t(11, 22)(q24, q12) translocation, are known to cause Ewing sarcoma as well as neuroectodermal and various other tumors.

**Format**

Liquid. Purified antibody supplied in 1x PBS buffer with 0.09% (w/v) sodium azide and 2% sucrose.

**Reconstitution & Storage**

Add 50 ul, l of distilled water. Final Anti-EWSR1 antibody concentration is 1 mg/ml in PBS buffer with 2% sucrose. For longer periods of storage, store at -20°C. Avoid repeat freeze-thaw cycles.

**Precautions**

EWSR1 Antibody - C-terminal region is for research use only and not for use in diagnostic or therapeutic procedures.

**EWSR1 Antibody - C-terminal region - Protein Information****Name** EWSR1**Synonyms** EWS**Function**

Binds to ssRNA containing the consensus sequence 5'-AGGUAA-3' (PubMed:<a href="http://www.uniprot.org/citations/21256132" target="\_blank">21256132</a>). Might normally function as a transcriptional repressor (PubMed:<a href="http://www.uniprot.org/citations/10767297" target="\_blank">10767297</a>). EWS-fusion-proteins (EFPS) may play a role in the tumorigenic process. They may disturb gene expression by mimicking, or interfering with the normal function of CTD-POLII within the transcription initiation complex. They may also contribute to an aberrant activation of the fusion protein target genes.

#### **Cellular Location**

Nucleus. Cytoplasm. Cell membrane. Note=Relocates from cytoplasm to ribosomes upon PTK2B/FAK2 activation

#### **Tissue Location**

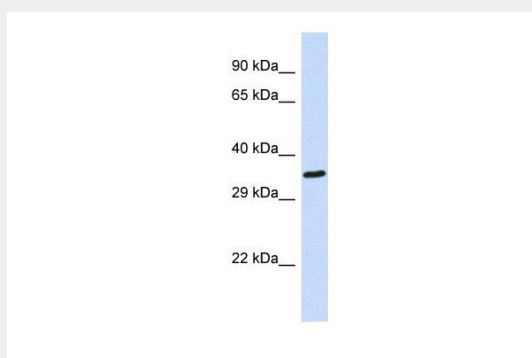
Ubiquitous.

### **EWSR1 Antibody - C-terminal region - Protocols**

Provided below are standard protocols that you may find useful for product applications.

- [Western Blot](#)
- [Blocking Peptides](#)
- [Dot Blot](#)
- [Immunohistochemistry](#)
- [Immunofluorescence](#)
- [Immunoprecipitation](#)
- [Flow Cytometry](#)
- [Cell Culture](#)

### **EWSR1 Antibody - C-terminal region - Images**



EWSR1 Antibody - C-terminal region (A110045) in Human 721\_B cells using Western Blot

Host: Rabbit

Target Name: EWSR1

Sample Tissue: 721\_B Whole cell lysate

s

Antibody Dilution: 1.0µg/ml

EWSR1 is strongly supported by BioGPS gene expression data to be expressed in Human 721\_B cells

### **EWSR1 Antibody - C-terminal region - Background**

This is a rabbit polyclonal antibody against EWSR1. It was validated on Western Blot by Abgent. At

Abgent we manufacture rabbit polyclonal antibodies on a large scale (200-1000 products/month) of high throughput manner. Our antibodies are peptide based and protein family oriented. We usually provide antibodies covering each member of a whole protein family of your interest. We also use our best efforts to provide you antibodies recognize various epitopes of a target protein. For availability of antibody needed for your experiment, please inquire ([sales@abgent.com](mailto:sales@abgent.com)).