

TLE2 antibody - N-terminal region
Rabbit Polyclonal Antibody
Catalog # AI10049**Specification**

TLE2 antibody - N-terminal region - Product Information

Application	WB
Primary Accession	Q04725
Other Accession	Q04725 , NP_003251 , NM_003260
Reactivity	Human, Mouse, Rat, Pig, Dog, Guinea Pig, Horse, Bovine
Predicted Host	Human, Mouse, Rat, Dog, Horse, Bovine
Clonality	Rabbit
Calculated MW	Polyclonal 80 kDa KDa

TLE2 antibody - N-terminal region - Additional Information**Gene ID** 7089**Alias Symbol** ESG, ESG2, FLJ41188, GRG2**Other Names**

Transducin-like enhancer protein 2, Enhancer of split groucho-like protein 2, ESG2, TLE2

Target/Specificity

TLE2 belongs to the WD repeat Groucho/TLE family. It contains 6 WD repeats. TLE2 is a transcriptional corepressor that binds to a number of transcription factors. It inhibits the transcriptional activation mediated by CTNNB1 and TCF family members in Wnt signaling. The effects of full-length TLE family members may be modulated by association with dominant-negative AES.

Format

Liquid. Purified antibody supplied in 1x PBS buffer with 0.09% (w/v) sodium azide and 2% sucrose.

Reconstitution & Storage

Add 50 ul of distilled water. Final anti-TLE2 antibody concentration is 1 mg/ml in PBS buffer with 2% sucrose. For longer periods of storage, store at -20°C. Avoid repeat freeze-thaw cycles.

Precautions

TLE2 antibody - N-terminal region is for research use only and not for use in diagnostic or therapeutic procedures.

TLE2 antibody - N-terminal region - Protein Information**Name** TLE2**Function**

Transcriptional corepressor that binds to a number of transcription factors. Inhibits the

transcriptional activation mediated by CTNNB1 and TCF family members in Wnt signaling. The effects of full-length TLE family members may be modulated by association with dominant-negative AES (By similarity).

Cellular Location

Nucleus.

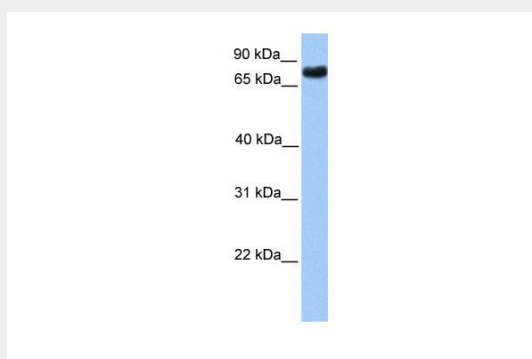
Tissue Location

In all tissues examined, mostly in heart, brain, and muscle

TLE2 antibody - N-terminal region - Protocols

Provided below are standard protocols that you may find useful for product applications.

- [Western Blot](#)
- [Blocking Peptides](#)
- [Dot Blot](#)
- [Immunohistochemistry](#)
- [Immunofluorescence](#)
- [Immunoprecipitation](#)
- [Flow Cytometry](#)
- [Cell Culture](#)

TLE2 antibody - N-terminal region - Images

TLE2 antibody - N-terminal region (AI10049) in Transfected 293T cells using Western Blot

WB Suggested Anti-TLE2 Antibody Titration: 0.2-1 µg/ml

Positive Control: Transfected 293T

TLE2 antibody - N-terminal region - Background

This is a rabbit polyclonal antibody against TLE2. It was validated on Western Blot using a cell lysate as a positive control. Abgent strives to provide antibodies covering each member of a whole protein family of your interest. We also use our best efforts to provide you antibodies recognize various epitopes of a target protein. For availability of antibody needed for your experiment, please inquire (sales@abgent.com).