

**TLE3 antibody - N-terminal region**  
**Rabbit Polyclonal Antibody**  
**Catalog # AI10053****Specification**

---

**TLE3 antibody - N-terminal region - Product Information**

Application	WB
Primary Accession	<a href="#">Q04726</a>
Other Accession	<a href="#">Q04726</a> , <a href="#">NP_005069</a> , <a href="#">NM_005078</a>
Reactivity	Human, Mouse, Rat, Rabbit, Zebrafish, Pig, Dog, Guinea Pig, Horse, Bovine
Predicted	Human, Mouse, Rat, Rabbit, Chicken, Guinea Pig, Horse, Bovine
Host	Rabbit
Clonality	Polyclonal
Calculated MW	83 kDa KDa

**TLE3 antibody - N-terminal region - Additional Information****Gene ID** 7090**Alias Symbol** ESG, ESG3, GRG3, HsT18976**Other Names**

Transducin-like enhancer protein 3, Enhancer of split groucho-like protein 3, ESG3, TLE3, KIAA1547

**Target/Specificity**

The TLE genes are differentially expressed and encode nuclear proteins, consistent with the presence of sequence motifs associated with nuclear functions. These genes are the human homologues of Drosophila groucho, a member of the Notch signaling pathway which controls a number of different cell-fate choices in invertebrates and vertebrates.

**Format**

Liquid. Purified antibody supplied in 1x PBS buffer with 0.09% (w/v) sodium azide and 2% sucrose.

**Reconstitution & Storage**

Add 100 ul of distilled water. Final anti-TLE3 antibody concentration is 1 mg/ml in PBS buffer with 2% sucrose. For longer periods of storage, store at -20°C. Avoid repeat freeze-thaw cycles.

**Precautions**

TLE3 antibody - N-terminal region is for research use only and not for use in diagnostic or therapeutic procedures.

**TLE3 antibody - N-terminal region - Protein Information****Name** TLE3**Synonyms** KIAA1547

**Function**

Transcriptional corepressor that binds to a number of transcription factors. Inhibits the transcriptional activation mediated by CTNNB1 and TCF family members in Wnt signaling. The effects of full-length TLE family members may be modulated by association with dominant-negative AES (By similarity).

**Cellular Location**

Nucleus.

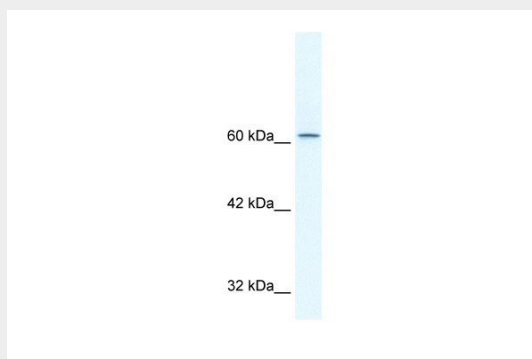
**Tissue Location**

Placenta and lung.

**TLE3 antibody - N-terminal region - Protocols**

Provided below are standard protocols that you may find useful for product applications.

- [Western Blot](#)
- [Blocking Peptides](#)
- [Dot Blot](#)
- [Immunohistochemistry](#)
- [Immunofluorescence](#)
- [Immunoprecipitation](#)
- [Flow Cytometry](#)
- [Cell Culture](#)

**TLE3 antibody - N-terminal region - Images**

TLE3 antibody - N-terminal region (AI10053) in Human HepG2 cells using Western Blot  
WB Suggested Anti-TLE3 Antibody Titration: 2.5µg/ml  
Positive Control: HepG2 cell lysate

**TLE3 antibody - N-terminal region - Background**

This is a rabbit polyclonal antibody against TLE3. It was validated on Western Blot using a cell lysate as a positive control. Abgent strives to provide antibodies covering each member of a whole protein family of your interest. We also use our best efforts to provide you antibodies recognize various epitopes of a target protein. For availability of antibody needed for your experiment, please inquire (sales@abgent.com).