

**LHX1 antibody - N-terminal region**  
**Rabbit Polyclonal Antibody**  
**Catalog # AI10054****Specification**

---

**LHX1 antibody - N-terminal region - Product Information**

Application	WB
Primary Accession	<a href="#">P48742</a>
Other Accession	<a href="#">P48742</a> , <a href="#">NP_005559</a> , <a href="#">NM_005568</a>
Reactivity	Human, Mouse, Rat, Rabbit, Pig, Dog, Guinea Pig, Horse, Bovine
Predicted Host	Human, Mouse, Rat, Chicken, Bovine
Clonality	Rabbit
Calculated MW	Polyclonal 45 kDa KDa

**LHX1 antibody - N-terminal region - Additional Information****Gene ID** 3975**Alias Symbol** LIM1, LIM-1**Other Names**

LIM/homeobox protein Lhx1, LIM homeobox protein 1, Homeobox protein Lim-1, hLim-1, LHX1, LIM-1, LIM1

**Target/Specificity**

LHX1 is a member of a large protein family which contains the LIM domain, a unique cysteine-rich zinc-binding domain. It may function as a transcriptional regulator and be involved in control of differentiation and development of neural and lymphoid cells.

**Format**

Liquid. Purified antibody supplied in 1x PBS buffer with 0.09% (w/v) sodium azide and 2% sucrose.

**Reconstitution & Storage**

Add 50 ul of distilled water. Final anti-LHX1 antibody concentration is 1 mg/ml in PBS buffer with 2% sucrose. For longer periods of storage, store at -20°C. Avoid repeat freeze-thaw cycles.

**Precautions**

LHX1 antibody - N-terminal region is for research use only and not for use in diagnostic or therapeutic procedures.

**LHX1 antibody - N-terminal region - Protein Information****Name** LHX1**Synonyms** LIM-1, LIM1**Function**

Potential transcription factor. May play a role in early mesoderm formation and later in lateral mesoderm differentiation and neurogenesis.

**Cellular Location**

Nucleus.

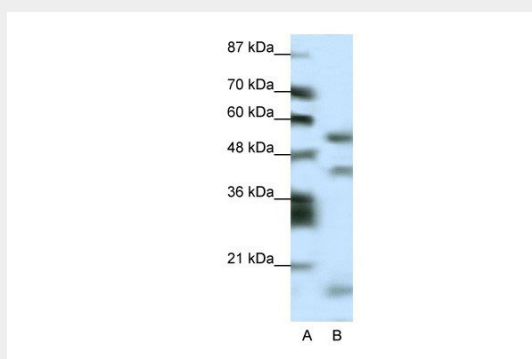
**Tissue Location**

Expressed in the brain, thymus, and tonsils. Expressed in samples from patients with chronic myeloid leukemia (CML) and in 58% of acute myeloid leukemia (AML) cell lines

**LHX1 antibody - N-terminal region - Protocols**

Provided below are standard protocols that you may find useful for product applications.

- [Western Blot](#)
- [Blocking Peptides](#)
- [Dot Blot](#)
- [Immunohistochemistry](#)
- [Immunofluorescence](#)
- [Immunoprecipitation](#)
- [Flow Cytometry](#)
- [Cell Culture](#)

**LHX1 antibody - N-terminal region - Images**

LHX1 antibody - N-terminal region (AI10054) in Human HepG2 cells using Western Blot

WB Suggested Anti-LHX1 Antibody Titration: 0.2-1 µg/ml

Positive Control: HepG2 cell lysate

**LHX1 antibody - N-terminal region - Background**

This is a rabbit polyclonal antibody against LHX1. It was validated on Western Blot using a cell lysate as a positive control. Abgent strives to provide antibodies covering each member of a whole protein family of your interest. We also use our best efforts to provide you antibodies recognize various epitopes of a target protein. For availability of antibody needed for your experiment, please inquire (sales@abgent.com).