

**TLE4 antibody - N-terminal region**  
**Rabbit Polyclonal Antibody**  
**Catalog # AI10056****Specification**

---

**TLE4 antibody - N-terminal region - Product Information**

Application	WB, IHC
Primary Accession	<a href="#">Q04727</a>
Other Accession	<a href="#">Q04727</a> , <a href="#">NP_008936</a> , <a href="#">NM_007005</a>
Reactivity	Human, Mouse, Rat, Rabbit, Pig, Dog, Guinea Pig, Horse, Bovine
Predicted	Human, Mouse, Rat, Rabbit, Pig, Chicken, Dog, Guinea Pig, Horse, Bovine
Host	Rabbit
Clonality	Polyclonal
Calculated MW	84 kDa KDa

**TLE4 antibody - N-terminal region - Additional Information****Gene ID** 7091**Alias Symbol** BCE-1, E(spl), ESG, ESG4, GRG4, BCE1**Other Names**

Transducin-like enhancer protein 4, Grg-4, Groucho-related protein 4, TLE4, GRG4, KIAA1261

**Target/Specificity**

TLE4 is the transcriptional corepressor that binds to a number of transcription factors. It inhibits the transcriptional activation mediated by PAX5, and by CTNNB1 and TCF family members in Wnt signaling. The effects of full-length TLE family members may be modulated by association with dominant-negative AES.

**Format**

Liquid. Purified antibody supplied in 1x PBS buffer with 0.09% (w/v) sodium azide and 2% sucrose.

**Reconstitution & Storage**

Add 50 ul of distilled water. Final anti-TLE4 antibody concentration is 1 mg/ml in PBS buffer with 2% sucrose. For longer periods of storage, store at -20°C. Avoid repeat freeze-thaw cycles.

**Precautions**

TLE4 antibody - N-terminal region is for research use only and not for use in diagnostic or therapeutic procedures.

**TLE4 antibody - N-terminal region - Protein Information****Name** TLE4**Synonyms** GRG4, KIAA1261

**Function**

Transcriptional corepressor that binds to a number of transcription factors. Inhibits the transcriptional activation mediated by PAX5, and by CTNNB1 and TCF family members in Wnt signaling. The effects of full-length TLE family members may be modulated by association with dominant-negative AES. Essential for the transcriptional repressor activity of SIX3 during retina and lens development and for SIX3 transcriptional auto-repression (By similarity). Involved in transcriptional repression of GNRHR and enhances MSX1-mediated transcriptional repression of CGA/alpha-GSU (By similarity).

**Cellular Location**

Nucleus.

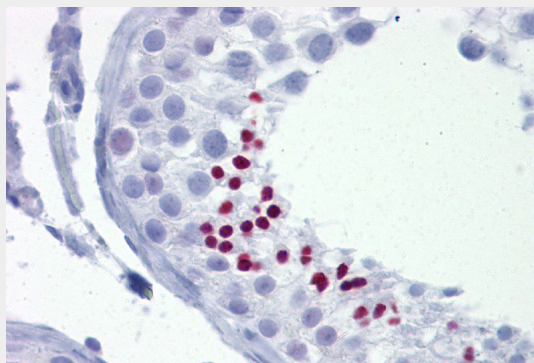
**Tissue Location**

In all tissues examined, mostly in brain, and muscle

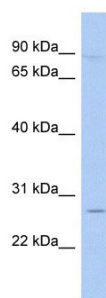
**TLE4 antibody - N-terminal region - Protocols**

Provided below are standard protocols that you may find useful for product applications.

- [Western Blot](#)
- [Blocking Peptides](#)
- [Dot Blot](#)
- [Immunohistochemistry](#)
- [Immunofluorescence](#)
- [Immunoprecipitation](#)
- [Flow Cytometry](#)
- [Cell Culture](#)

**TLE4 antibody - N-terminal region - Images**

TLE4 antibody - N-terminal region (AI10056) in Human Testis cells using Immunohistochemistry  
Testis



TLE4 antibody - N-terminal region (AI10056) in Human THP-1 cells using Western Blot  
WB Suggested Anti-TLE4 Antibody Titration: 0.2-1  $\mu$ g/ml  
ELISA Titer: 1:62500  
Positive Control: THP-1 cell lysate

#### **TLE4 antibody - N-terminal region - Background**

This is a rabbit polyclonal antibody against TLE4. It was validated on Western Blot using a cell lysate as a positive control. Abgent strives to provide antibodies covering each member of a whole protein family of your interest. We also use our best efforts to provide you antibodies recognize various epitopes of a target protein. For availability of antibody needed for your experiment, please inquire ([sales@abgent.com](mailto:sales@abgent.com)).