

NEUROD6 antibody - N-terminal region
Rabbit Polyclonal Antibody
Catalog # AI10058**Specification**

NEUROD6 antibody - N-terminal region - Product Information

Application	WB
Primary Accession	O96NK8
Other Accession	O96NK8 , NP_073565 , NM_022728
Reactivity	Human, Mouse, Rat, Pig, Dog, Horse, Bovine
Predicted Host	Human, Mouse, Rat, Chicken, Dog, Horse
Clonality	Rabbit
Calculated MW	Polyclonal 39 kDa KDa

NEUROD6 antibody - N-terminal region - Additional Information**Gene ID** 63974**Alias Symbol** Nex1, Atoh2, MATH2, NEX1M, Math-2, bHLHa2**Other Names**

Neurogenic differentiation factor 6, NeuroD6, Class A basic helix-loop-helix protein 2, bHLHa2, Protein atonal homolog 2, NEUROD6, ATOH2, BHLHA2

Target/Specificity

NEUROD6 contains 1 basic helix-loop-helix (bHLH) domain. It activates E box-dependent transcription in collaboration with TCF3/E47 and may be a trans-acting factor involved in the development and maintenance of the mammalian nervous system. It transactivates the promoter of its own gene.

Format

Liquid. Purified antibody supplied in 1x PBS buffer with 0.09% (w/v) sodium azide and 2% sucrose.

Reconstitution & Storage

Add 50 ul of distilled water. Final anti-NEUROD6 antibody concentration is 1 mg/ml in PBS buffer with 2% sucrose. For longer periods of storage, store at -20°C. Avoid repeat freeze-thaw cycles.

Precautions

NEUROD6 antibody - N-terminal region is for research use only and not for use in diagnostic or therapeutic procedures.

NEUROD6 antibody - N-terminal region - Protein Information**Name** NEUROD6**Synonyms** ATOH2, BHLHA2

Function

Activates E box-dependent transcription in collaboration with TCF3/E47. May be a trans-acting factor involved in the development and maintenance of the mammalian nervous system. Transactivates the promoter of its own gene (By similarity).

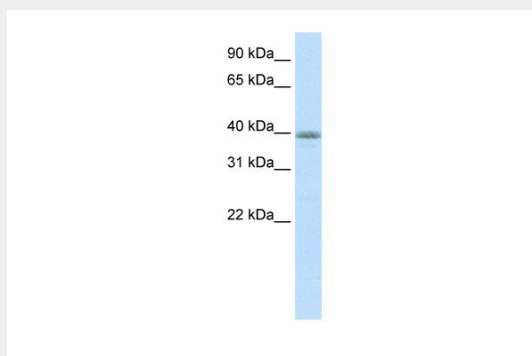
Cellular Location

Nucleus.

NEUROD6 antibody - N-terminal region - Protocols

Provided below are standard protocols that you may find useful for product applications.

- [Western Blot](#)
- [Blocking Peptides](#)
- [Dot Blot](#)
- [Immunohistochemistry](#)
- [Immunofluorescence](#)
- [Immunoprecipitation](#)
- [Flow Cytometry](#)
- [Cell Culture](#)

NEUROD6 antibody - N-terminal region - Images

NEUROD6 antibody - N-terminal region (AI10058) in Transfected 293T cells using Western Blot
WB Suggested Anti-NEUROD6 Antibody Titration: 0.2-1 $\mu\text{g/ml}$
Positive Control: Transfected 293T

NEUROD6 antibody - N-terminal region - Background

This is a rabbit polyclonal antibody against NEUROD6. It was validated on Western Blot using a cell lysate as a positive control. Abgent strives to provide antibodies covering each member of a whole protein family of your interest. We also use our best efforts to provide you antibodies recognize various epitopes of a target protein. For availability of antibody needed for your experiment, please inquire (sales@abgent.com).