

**WDHD1 antibody - middle region**  
**Rabbit Polyclonal Antibody**  
**Catalog # AI10072****Specification**

---

**WDHD1 antibody - middle region - Product Information**

Application	WB
Primary Accession	<a href="#">O75717</a>
Other Accession	<a href="#">O75717</a> , <a href="#">NP_009017</a> , <a href="#">NM_007086</a>
Reactivity	Human, Mouse, Rat, Rabbit, Pig, Dog, Horse, Bovine
Predicted	Human, Mouse, Rat, Rabbit, Pig, Chicken, Dog, Horse, Bovine
Host	Rabbit
Clonality	Polyclonal
Calculated MW	126 kDa KDa

**WDHD1 antibody - middle region - Additional Information****Gene ID** 11169**Alias Symbol** **AND-1, CTF4, CHTF4****Other Names**

WD repeat and HMG-box DNA-binding protein 1, Acidic nucleoplasmic DNA-binding protein 1, And-1, WDHD1, AND1

**Target/Specificity**

Reactive with the SepB fragment (428-850aa) of WDHD1. WDHD1 contains multiple N-terminal WD40 domains and a C-terminal high mobility group (HMG) box. WD40 domains are found in a variety of eukaryotic proteins and may function as adaptor/regulatory modules in signal transduction, pre-mRNA processing and cytoskeleton assembly. HMG boxes are found in many eukaryotic proteins involved in chromatin assembly, transcription and replication. WDHD1 may also be involved in protein-protein interactions. The protein encoded by this gene contains multiple N-terminal WD40 domains and a C-terminal high mobility group (HMG) box. WD40 domains are found in a variety of eukaryotic proteins and may function as adaptor/regulatory modules in signal transduction, pre-mRNA processing and cytoskeleton assembly. HMG boxes are found in many eukaryotic proteins involved in chromatin assembly, transcription and replication. Alternative splicing results in two transcript variants encoding different isoforms.

**Format**

Liquid. Purified antibody supplied in 1x PBS buffer with 0.09% (w/v) sodium azide and 2% sucrose.

**Reconstitution & Storage**

Add 50 ul of distilled water. Final anti-WDHD1 antibody concentration is 1 mg/ml in PBS buffer with 2% sucrose. For longer periods of storage, store at -20°C. Avoid repeat freeze-thaw cycles.

**Precautions**

WDHD1 antibody - middle region is for research use only and not for use in diagnostic or therapeutic procedures.

## WDHD1 antibody - middle region - Protein Information

**Name** WDHD1 ([HGNC:23170](#))

**Synonyms** AND1

### Function

Core replisome component that acts as a replication initiation factor. Binds directly to the CMG complex and functions as a hub to recruit additional proteins to the replication fork.

### Cellular Location

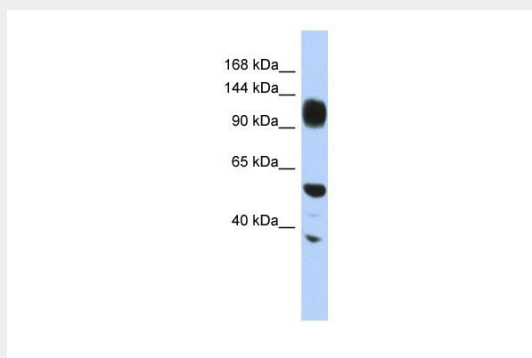
Nucleus, nucleoplasm

## WDHD1 antibody - middle region - Protocols

Provided below are standard protocols that you may find useful for product applications.

- [Western Blot](#)
- [Blocking Peptides](#)
- [Dot Blot](#)
- [Immunohistochemistry](#)
- [Immunofluorescence](#)
- [Immunoprecipitation](#)
- [Flow Cytometry](#)
- [Cell Culture](#)

## WDHD1 antibody - middle region - Images



WDHD1 antibody - middle region (AI10072) in Human HepG2 cells using Western Blot

WB Suggested Anti-WDHD1 Antibody Titration: 0.2-1 µg/ml

ELISA Titer: 1:12500

Positive Control: HepG2 cell lysate

## WDHD1 antibody - middle region - Background

This is a rabbit polyclonal antibody against WDHD1. It was validated on Western Blot using a cell lysate as a positive control. Abgent strives to provide antibodies covering each member of a whole protein family of your interest. We also use our best efforts to provide you antibodies recognize various epitopes of a target protein. For availability of antibody needed for your experiment, please inquire ([sales@abgent.com](mailto:sales@abgent.com)).