

KDM3B Antibody - N-terminal region
Rabbit Polyclonal Antibody
Catalog # AI10076**Specification**

KDM3B Antibody - N-terminal region - Product Information

Application	WB
Primary Accession	Q7LBC6
Other Accession	Q7LBC6-3
Reactivity	Human, Mouse, Rat, Rabbit, Pig, Dog, Guinea Pig, Horse, Bovine
Predicted	Human, Mouse, Rabbit, Pig, Dog, Guinea Pig, Horse, Bovine
Host	Rabbit
Clonality	Polyclonal
Calculated MW	83 kDa KDa

KDM3B Antibody - N-terminal region - Additional Information**Gene ID** 51780**Other Names**

Lysine-specific demethylase 3B, 11411-, JmjC domain-containing histone demethylation protein 2B, Jumonji domain-containing protein 1B, Nuclear protein 5qNCA, KDM3B, C5orf7, JHDM2B, JMJD1B, KIAA1082

Target/Specificity

KDM3B is a histone demethylase that specifically demethylates 'Lys-9' of histone H3, thereby playing a central role in histone code. Demethylation of Lys residue generates formaldehyde and succinate. It may have tumor suppressor activity.

Format

Liquid. Purified antibody supplied in 1x PBS buffer with 0.09% (w/v) sodium azide and 2% sucrose.

Reconstitution & Storage

Add 50 ul, l of distilled water. Final Anti-KDM3B antibody concentration is 1 mg/ml in PBS buffer with 2% sucrose. For longer periods of storage, store at -20°C. Avoid repeat freeze-thaw cycles.

Precautions

KDM3B Antibody - N-terminal region is for research use only and not for use in diagnostic or therapeutic procedures.

KDM3B Antibody - N-terminal region - Protein Information**Name** KDM3B**Synonyms** C5orf7, JHDM2B, JMJD1B, KIAA1082

Function

Histone demethylase that specifically demethylates 'Lys-9' of histone H3, thereby playing a central role in histone code. Demethylation of Lys residue generates formaldehyde and succinate. May have tumor suppressor activity.

Cellular Location

Nucleus.

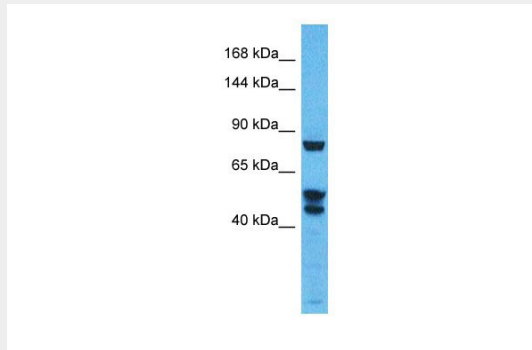
Tissue Location

Ubiquitous. Highly expressed in placenta, skeletal muscle, kidney, heart and liver.

KDM3B Antibody - N-terminal region - Protocols

Provided below are standard protocols that you may find useful for product applications.

- [Western Blot](#)
- [Blocking Peptides](#)
- [Dot Blot](#)
- [Immunohistochemistry](#)
- [Immunofluorescence](#)
- [Immunoprecipitation](#)
- [Flow Cytometry](#)
- [Cell Culture](#)

KDM3B Antibody - N-terminal region - Images

KDM3B Antibody - N-terminal region (AI10076) in Human Thymus Tumor cells using Western Blot

Host: Rabbit

Target Name: KDM3B

Sample Tissue: Thymus Tumor lysates

Antibody Dilution: 1.0µg/ml

KDM3B Antibody - N-terminal region - Background

This is a rabbit polyclonal antibody against KDM3B. It was validated on Western Blot by Abgent. At Abgent we manufacture rabbit polyclonal antibodies on a large scale (200-1000 products/month) of high throughput manner. Our antibodies are peptide based and protein family oriented. We usually provide antibodies covering each member of a whole protein family of your interest. We also use our best efforts to provide you antibodies recognize various epitopes of a target protein. For availability of antibody needed for your experiment, please inquire (sales@abgent.com).