

MYNN antibody - middle region
Rabbit Polyclonal Antibody
Catalog # AI10080**Specification**

MYNN antibody - middle region - Product Information

Application	WB
Primary Accession	O9NPC7
Other Accession	O9NPC7 , NP_061127 , NM_018657
Reactivity	Human, Rat, Rabbit, Dog, Guinea Pig, Horse, Bovine
Predicted	Human, Rat, Rabbit, Chicken, Dog, Horse, Bovine
Host	Rabbit
Clonality	Polyclonal
Calculated MW	69 kDa KDa

MYNN antibody - middle region - Additional Information**Gene ID** 55892**Alias Symbol** OSZF, SBBIZ1, ZBTB31, ZNF902
Other Names
Myoneurin, Zinc finger and BTB domain-containing protein 31, MYNN, OSZF, ZBTB31**Target/Specificity**

Myoneurin belongs to the BTB/POZ and zinc finger protein family. The BTB/POZ and zinc finger proteins (BTB/POZ-ZF) constitute a growing family of proteins with gene expression regulatory functions since they have been shown to be involved in both transcriptional activation and repression of various genes in a broad range of species.

Format

Liquid. Purified antibody supplied in 1x PBS buffer with 0.09% (w/v) sodium azide and 2% sucrose.

Reconstitution & Storage

Add 100 ul of distilled water. Final anti-MYNN antibody concentration is 1 mg/ml in PBS buffer with 2% sucrose. For longer periods of storage, store at -20°C. Avoid repeat freeze-thaw cycles.

Precautions

MYNN antibody - middle region is for research use only and not for use in diagnostic or therapeutic procedures.

MYNN antibody - middle region - Protein Information**Name** MYNN**Synonyms** OSZF, ZBTB31

Cellular Location

Nucleus.

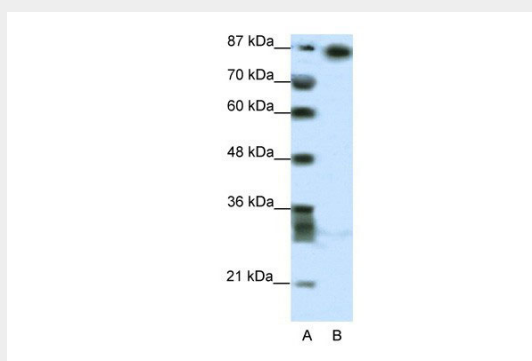
Tissue Location

Mainly expressed in the neuromuscular system. Located in and around synaptic myonuclei in adult muscle. Expression is dysregulated after nerve injury. Also found in the testis, ovary and placenta.

MYNN antibody - middle region - Protocols

Provided below are standard protocols that you may find useful for product applications.

- [Western Blot](#)
- [Blocking Peptides](#)
- [Dot Blot](#)
- [Immunohistochemistry](#)
- [Immunofluorescence](#)
- [Immunoprecipitation](#)
- [Flow Cytometry](#)
- [Cell Culture](#)

MYNN antibody - middle region - Images

MYNN antibody - middle region (AI10080) in Human HepG2 cells using Western Blot
WB Suggested Anti-MYNN Antibody Titration: 2.5µg/ml
ELISA Titer: 1:62500
Positive Control: HepG2 cell lysate

MYNN antibody - middle region - Background

This is a rabbit polyclonal antibody against MYNN. It was validated on Western Blot using a cell lysate as a positive control. Abgent strives to provide antibodies covering each member of a whole protein family of your interest. We also use our best efforts to provide you antibodies recognize various epitopes of a target protein. For availability of antibody needed for your experiment, please inquire (sales@abgent.com).