

ZBTB4 antibody - middle region
Rabbit Polyclonal Antibody
Catalog # AI10082**Specification**

ZBTB4 antibody - middle region - Product Information

Application	WB
Primary Accession	O9P1Z0
Other Accession	O9P1Z0 , NP_065950 , NM_020899
Reactivity	Human, Mouse, Rat, Rabbit, Dog, Guinea Pig, Horse
Predicted	Human, Mouse, Rat, Rabbit, Dog, Guinea Pig, Horse
Host	Rabbit
Clonality	Polyclonal
Calculated MW	105 kDa KDa

ZBTB4 antibody - middle region - Additional Information**Gene ID** 57659**Alias Symbol** KAISO-L1, KIAA1538, ZNF903**Other Names**

Zinc finger and BTB domain-containing protein 4, KAISO-like zinc finger protein 1, KAISO-L1, ZBTB4, KIAA1538

Target/Specificity

ZBTB4 may be involved in transcriptional regulation.

Format

Liquid. Purified antibody supplied in 1x PBS buffer with 0.09% (w/v) sodium azide and 2% sucrose.

Reconstitution & Storage

Add 50 ul of distilled water. Final anti-ZBTB4 antibody concentration is 1 mg/ml in PBS buffer with 2% sucrose. For longer periods of storage, store at -20°C. Avoid repeat freeze-thaw cycles.

Precautions

ZBTB4 antibody - middle region is for research use only and not for use in diagnostic or therapeutic procedures.

ZBTB4 antibody - middle region - Protein Information**Name** ZBTB4**Synonyms** KIAA1538**Function**

Transcriptional repressor with bimodal DNA-binding specificity. Represses transcription in a

methyl-CpG-dependent manner. Binds with a higher affinity to methylated CpG dinucleotides in the consensus sequence 5'-CGCG-3' but can also bind to the non-methylated consensus sequence 5'-CTGCNA-3' also known as the consensus kaiso binding site (KBS). Can also bind specifically to a single methyl-CpG pair and can bind hemimethylated DNA but with a lower affinity compared to methylated DNA (PubMed: <http://www.uniprot.org/citations/16354688> target="_blank">16354688). Plays a role in postnatal myogenesis, may be involved in the regulation of satellite cells self-renewal (By similarity).

Cellular Location

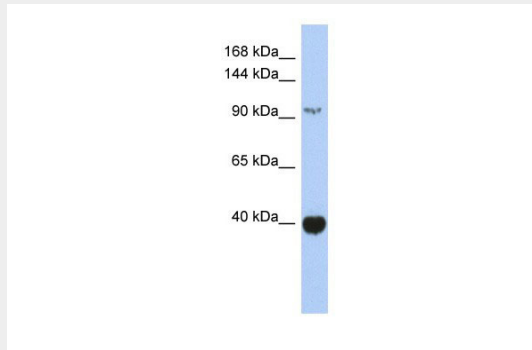
Nucleus. Chromosome. Note=Localizes to chromocenters

ZBTB4 antibody - middle region - Protocols

Provided below are standard protocols that you may find useful for product applications.

- [Western Blot](#)
- [Blocking Peptides](#)
- [Dot Blot](#)
- [Immunohistochemistry](#)
- [Immunofluorescence](#)
- [Immunoprecipitation](#)
- [Flow Cytometry](#)
- [Cell Culture](#)

ZBTB4 antibody - middle region - Images



ZBTB4 antibody - middle region (AI10082) in Human Spleen cells using Western Blot

WB Suggested Anti-ZBTB4 Antibody Titration: 0.2-1 µg/ml

ELISA Titer: 1:62500

Positive Control: Human Spleen

ZBTB4 antibody - middle region - Background

This is a rabbit polyclonal antibody against ZBTB4. It was validated on Western Blot using a cell lysate as a positive control. Abgent strives to provide antibodies covering each member of a whole protein family of your interest. We also use our best efforts to provide you antibodies recognize various epitopes of a target protein. For availability of antibody needed for your experiment, please inquire (sales@abgent.com).