

**SOX12 antibody - C-terminal region**  
**Rabbit Polyclonal Antibody**  
**Catalog # AI10085****Specification**

---

**SOX12 antibody - C-terminal region - Product Information**

Application	WB
Primary Accession	<a href="#">O15370</a>
Other Accession	<a href="#">O15370</a> , <a href="#">NP_008874</a> , <a href="#">NM_006943</a>
Reactivity	Human, Mouse, Rat, Pig, Dog, Guinea Pig, Horse
Predicted	Human, Mouse, Rat, Dog, Guinea Pig
Host	Rabbit
Clonality	Polyclonal
Calculated MW	34 kDa KDa

**SOX12 antibody - C-terminal region - Additional Information****Gene ID** 6666

Alias Symbol	<b>SOX22</b>
<b>Other Names</b>	
Transcription factor SOX-12, Protein SOX-22, SOX12, SOX22	

**Target/Specificity**

Members of the SOX family of transcription factors are characterized by the presence of a DNA-binding high mobility group (HMG) domain, homologous to the HMG box of sex-determining region Y (SRY). Forming a subgroup of the HMG domain superfamily, SOX proteins have been implicated in cell fate decisions in a diverse range of developmental processes. SOX transcription factors have diverse tissue-specific expression patterns during early development and have been proposed to act as target-specific transcription factors and/or as chromatin structure regulatory elements. The SOX12 gene encodes a protein that was identified as a SOX family member based on conserved domains and its expression in various tissues suggests a role in both differentiation and maintenance of several cell types.

**Format**

Liquid. Purified antibody supplied in 1x PBS buffer with 0.09% (w/v) sodium azide and 2% sucrose.

**Reconstitution & Storage**

Add 50 ul of distilled water. Final anti-SOX12 antibody concentration is 1 mg/ml in PBS buffer with 2% sucrose. For longer periods of storage, store at -20°C. Avoid repeat freeze-thaw cycles.

**Precautions**

SOX12 antibody - C-terminal region is for research use only and not for use in diagnostic or therapeutic procedures.

**SOX12 antibody - C-terminal region - Protein Information**

**Name** SOX12**Synonyms** SOX22**Function**

Transcription factor that binds to DNA at the consensus sequence 5'-ACCAAAG-3' (By similarity). Acts as a transcriptional activator (By similarity). Binds cooperatively with POU3F2/BRN2 or POU3F1/OCT6 to gene promoters, which enhances transcriptional activation (By similarity). Involved in the differentiation of naive CD4-positive T-cells into peripherally induced regulatory T (pT reg) cells under inflammatory conditions (By similarity). Binds to the promoter region of the FOXP3 gene and promotes its transcription, and might thereby contribute to pT reg cell differentiation in the spleen and lymph nodes during inflammation (By similarity). Plays a redundant role with SOX4 and SOX11 in cell survival of developing tissues such as the neural tube, branchial arches and somites, thereby contributing to organogenesis (By similarity).

**Cellular Location**

Nucleus {ECO:0000255|PROSITE-ProRule:PRU00267, ECO:0000269|PubMed:9215677}

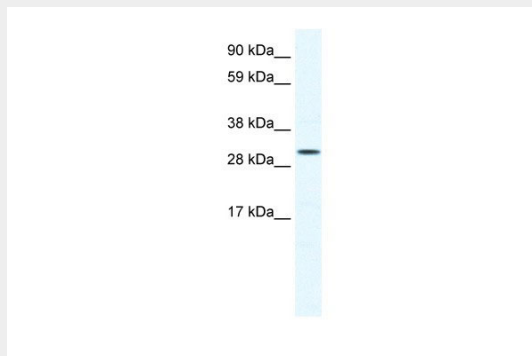
**Tissue Location**

Expressed most abundantly in the CNS (PubMed:9215677). Expressed in the heart, pancreas, thymus, testis and ovary (PubMed:9215677). Weakly expressed in brain, placenta, lung, liver, skeletal muscle, kidney, spleen, prostate, small intestine, colon, and peripheral blood lymphocytes (PubMed:9215677)

**SOX12 antibody - C-terminal region - Protocols**

Provided below are standard protocols that you may find useful for product applications.

- [Western Blot](#)
- [Blocking Peptides](#)
- [Dot Blot](#)
- [Immunohistochemistry](#)
- [Immunofluorescence](#)
- [Immunoprecipitation](#)
- [Flow Cytometry](#)
- [Cell Culture](#)

**SOX12 antibody - C-terminal region - Images**

SOX12 antibody - C-terminal region (AI10085) in Human Jurkat cells using Western Blot  
WB Suggested Anti-SOX12 Antibody Titration: 0.2-1 µg/ml  
ELISA Titer: 1:62500

Positive Control: Jurkat cell lysate

### **SOX12 antibody - C-terminal region - Background**

This is a rabbit polyclonal antibody against SOX12. It was validated on Western Blot using a cell lysate as a positive control. Abgent strives to provide antibodies covering each member of a whole protein family of your interest. We also use our best efforts to provide you antibodies recognize various epitopes of a target protein. For availability of antibody needed for your experiment, please inquire ([sales@abgent.com](mailto:sales@abgent.com)).