

SP2 antibody - N-terminal region
Rabbit Polyclonal Antibody
Catalog # AI10086**Specification**

SP2 antibody - N-terminal region - Product Information

Application	WB
Primary Accession	Q02086
Other Accession	Q02086 , AAH05914 , NM_003110
Reactivity	Human, Mouse, Rat, Rabbit, Pig, Dog, Horse, Bovine, Yeast
Predicted	Human, Mouse, Rat, Rabbit, Pig, Horse, Bovine
Host	Rabbit
Clonality	Polyclonal
Calculated MW	27 kDa KDa

SP2 antibody - N-terminal region - Additional Information**Gene ID** 6668**Other Names**

Transcription factor Sp2, SP2, KIAA0048

Target/Specificity

SP2 is a member of the Sp subfamily of Sp/XKLF transcription factors. Sp family proteins are sequence-specific DNA-binding proteins characterized by an amino-terminal trans-activation domain and three carboxy-terminal zinc finger motifs. This protein contains the least conserved DNA-binding domain within the Sp subfamily of proteins, and its DNA sequence specificity differs from the other Sp proteins. It localizes primarily within subnuclear foci associated with the nuclear matrix, and can activate or in some cases repress expression from different promoters.

Format

Liquid. Purified antibody supplied in 1x PBS buffer with 0.09% (w/v) sodium azide and 2% sucrose.

Reconstitution & Storage

Add 50 ul of distilled water. Final anti-SP2 antibody concentration is 1 mg/ml in PBS buffer with 2% sucrose. For longer periods of storage, store at -20°C. Avoid repeat freeze-thaw cycles.

Precautions

SP2 antibody - N-terminal region is for research use only and not for use in diagnostic or therapeutic procedures.

SP2 antibody - N-terminal region - Protein Information**Name** SP2**Synonyms** KIAA0048

Function

Binds to GC box promoters elements and selectively activates mRNA synthesis from genes that contain functional recognition sites.

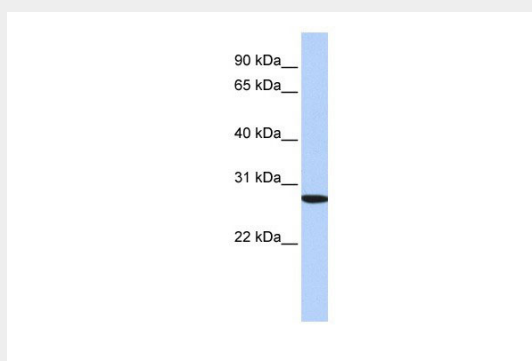
Cellular Location

Nucleus.

SP2 antibody - N-terminal region - Protocols

Provided below are standard protocols that you may find useful for product applications.

- [Western Blot](#)
- [Blocking Peptides](#)
- [Dot Blot](#)
- [Immunohistochemistry](#)
- [Immunofluorescence](#)
- [Immunoprecipitation](#)
- [Flow Cytometry](#)
- [Cell Culture](#)

SP2 antibody - N-terminal region - Images

SP2 antibody - N-terminal region (AI10086) in Human HepG2 cells using Western Blot
WB Suggested Anti-SP2 Antibody Titration: 0.2-1 µg/ml
ELISA Titer: 1:312500
Positive Control: HepG2 cell lysate

SP2 antibody - N-terminal region - Background

This is a rabbit polyclonal antibody against SP2. It was validated on Western Blot using a cell lysate as a positive control. Abgent strives to provide antibodies covering each member of a whole protein family of your interest. We also use our best efforts to provide you antibodies recognize various epitopes of a target protein. For availability of antibody needed for your experiment, please inquire (sales@abgent.com).