

WNT8B antibody - middle region
Rabbit Polyclonal Antibody
Catalog # AI10091**Specification**

WNT8B antibody - middle region - Product Information

| | |
|-------------------|--|
| Application | WB |
| Primary Accession | O93098 |
| Other Accession | O93098 , NP_003384 , NM_003393 |
| Reactivity | Human, Mouse, Rat, Rabbit, Zebrafish, Pig, Dog, Guinea Pig, Horse, Bovine |
| Predicted | Human, Mouse, Rat, Rabbit, Zebrafish, Pig, Chicken, Dog, Guinea Pig, Horse |
| Host | Rabbit |
| Clonality | Polyclonal |
| Calculated MW | 39 kDa KDa |

WNT8B antibody - middle region - Additional Information**Gene ID** 7479**Other Names**

Protein Wnt-8b, WNT8B

Target/Specificity

The WNT family consists of several secreted signaling proteins. These proteins have been implicated in oncogenesis and in several developmental processes, including regulation of cell fate and patterning during embryogenesis. WNT8B is a protein which shows 95%, 86% and 71% amino acid identity to the mouse, zebrafish and Xenopus Wnt8B proteins, respectively. The expression patterns of the human and mouse genes appear identical and are restricted to the developing brain. The chromosomal location of this gene to 10q24 suggests it as a candidate gene for partial epilepsy. The WNT gene family consists of structurally related genes which encode secreted signaling proteins. These proteins have been implicated in oncogenesis and in several developmental processes, including regulation of cell fate and patterning during embryogenesis. This gene is a member of the WNT gene family. It encodes a protein which shows 95%, 86% and 71% amino acid identity to the mouse, zebrafish and Xenopus Wnt8B proteins, respectively. The expression patterns of the human and mouse genes appear identical and are restricted to the developing brain. The chromosomal location of this gene to 10q24 suggests it as a candidate gene for partial epilepsy.

Format

Liquid. Purified antibody supplied in 1x PBS buffer with 0.09% (w/v) sodium azide and 2% sucrose.

Reconstitution & Storage

Add 100 ul of distilled water. Final anti-WNT8B antibody concentration is 1 mg/ml in PBS buffer with 2% sucrose. For longer periods of storage, store at -20°C. Avoid repeat freeze-thaw cycles.

Precautions

WNT8B antibody - middle region is for research use only and not for use in diagnostic or therapeutic procedures.

WNT8B antibody - middle region - Protein Information

Name WNT8B

Function

Ligand for members of the frizzled family of seven transmembrane receptors. May play an important role in the development and differentiation of certain forebrain structures, notably the hippocampus.

Cellular Location

Secreted, extracellular space, extracellular matrix

Tissue Location

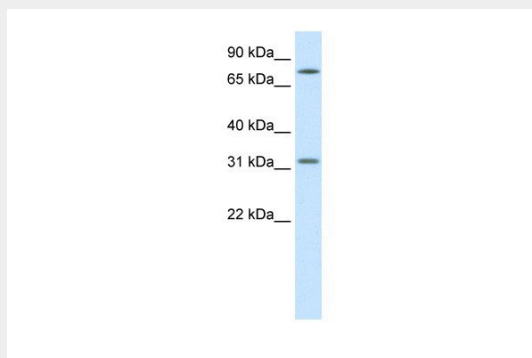
Expression is restricted to the brain, and more specifically to the forebrain.

WNT8B antibody - middle region - Protocols

Provided below are standard protocols that you may find useful for product applications.

- [Western Blot](#)
- [Blocking Peptides](#)
- [Dot Blot](#)
- [Immunohistochemistry](#)
- [Immunofluorescence](#)
- [Immunoprecipitation](#)
- [Flow Cytometry](#)
- [Cell Culture](#)

WNT8B antibody - middle region - Images



WNT8B antibody - middle region (AI10091) in Human Brain cells using Western Blot
WB Suggested Anti-WNT8B Antibody Titration: 1.25µg/ml
ELISA Titer: 1:1562500
Positive Control: Human brain

WNT8B antibody - middle region - Background

This is a rabbit polyclonal antibody against WNT8B. It was validated on Western Blot using a cell lysate as a positive control. Abgent strives to provide antibodies covering each member of a whole protein family of your interest. We also use our best efforts to provide you antibodies recognize various epitopes of a target protein. For availability of antibody needed for your experiment, please

inquire (sales@abgent.com).