

ZNF189 antibody - middle region
Rabbit Polyclonal Antibody
Catalog # AI10095**Specification**

ZNF189 antibody - middle region - Product Information

Application	WB
Primary Accession	O75820
Other Accession	O75820 , NP_003443 , NM_003452
Reactivity	Human, Mouse, Rat, Rabbit, Zebrafish, Pig, Dog, Guinea Pig, Horse, Bovine
Predicted	Human, Rabbit, Dog, Guinea Pig, Horse, Bovine
Host	Rabbit
Clonality	Polyclonal
Calculated MW	73 kDa KDa

ZNF189 antibody - middle region - Additional Information**Gene ID** 7743**Other Names**

Zinc finger protein 189, ZNF189

Target/Specificity

ZNF189 may be involved in transcriptional regulation.

Format

Liquid. Purified antibody supplied in 1x PBS buffer with 0.09% (w/v) sodium azide and 2% sucrose.

Reconstitution & Storage

Add 50 ul of distilled water. Final anti-ZNF189 antibody concentration is 1 mg/ml in PBS buffer with 2% sucrose. For longer periods of storage, store at -20°C. Avoid repeat freeze-thaw cycles.

Precautions

ZNF189 antibody - middle region is for research use only and not for use in diagnostic or therapeutic procedures.

ZNF189 antibody - middle region - Protein Information**Name** ZNF189**Function**

May be involved in transcriptional regulation.

Cellular Location

Nucleus.

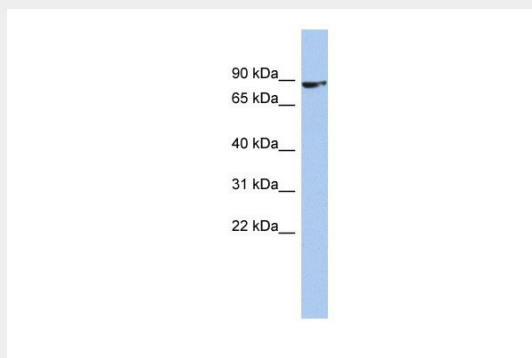
Tissue Location

Ubiquitous.

ZNF189 antibody - middle region - Protocols

Provided below are standard protocols that you may find useful for product applications.

- [Western Blot](#)
- [Blocking Peptides](#)
- [Dot Blot](#)
- [Immunohistochemistry](#)
- [Immunofluorescence](#)
- [Immunoprecipitation](#)
- [Flow Cytometry](#)
- [Cell Culture](#)

ZNF189 antibody - middle region - Images

ZNF189 antibody - middle region (AI10095) in Human OVCAR-3 cells using Western Blot

WB Suggested Anti-ZNF189 Antibody Titration: 0.2-1 µg/ml

ELISA Titer: 1:62500

Positive Control: OVCAR-3 cell lysate

ZNF189 is supported by BioGPS gene expression data to be expressed in OVCAR3

ZNF189 antibody - middle region - Background

This is a rabbit polyclonal antibody against ZNF189. It was validated on Western Blot using a cell lysate as a positive control. Abgent strives to provide antibodies covering each member of a whole protein family of your interest. We also use our best efforts to provide you antibodies recognize various epitopes of a target protein. For availability of antibody needed for your experiment, please inquire (sales@abgent.com).