

HSPBAP1 antibody - middle region
Rabbit Polyclonal Antibody
Catalog # AI10096**Specification**

HSPBAP1 antibody - middle region - Product Information

Application	WB
Primary Accession	O96EW2
Other Accession	O96EW2 , NP_078886 , NM_024610
Reactivity	Human, Mouse, Rat, Rabbit, Zebrafish, Pig, Dog, Guinea Pig, Horse, Bovine
Predicted	Human, Rat, Rabbit, Pig, Chicken, Dog, Horse
Host	Rabbit
Clonality	Polyclonal
Calculated MW	55 kDa KDa

HSPBAP1 antibody - middle region - Additional Information**Gene ID** 79663**Alias Symbol** **FLJ22623, FLJ39386, PASS1****Other Names**

HSPB1-associated protein 1, 27 kDa heat shock protein-associated protein 1, Protein associated with small stress protein 1, HSPBAP1, PASS1

Target/Specificity

HSPBAP1 may play a role in cellular stress response.

Format

Liquid. Purified antibody supplied in 1x PBS buffer with 0.09% (w/v) sodium azide and 2% sucrose.

Reconstitution & Storage

Add 50 ul of distilled water. Final anti-HSPBAP1 antibody concentration is 1 mg/ml in PBS buffer with 2% sucrose. For longer periods of storage, store at -20°C. Avoid repeat freeze-thaw cycles.

Precautions

HSPBAP1 antibody - middle region is for research use only and not for use in diagnostic or therapeutic procedures.

HSPBAP1 antibody - middle region - Protein Information**Name** HSPBAP1**Synonyms** PASS1**Function**

May play a role in cellular stress response.

Cellular Location

Cytoplasm.

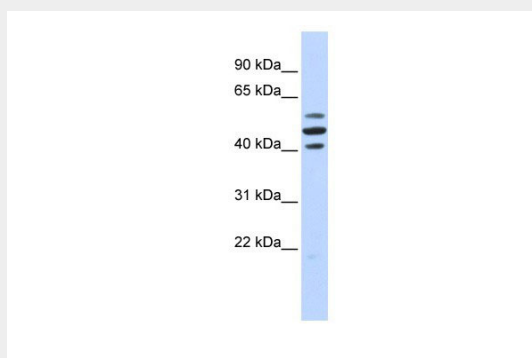
Tissue Location

Widely expressed..

HSPBAP1 antibody - middle region - Protocols

Provided below are standard protocols that you may find useful for product applications.

- [Western Blot](#)
- [Blocking Peptides](#)
- [Dot Blot](#)
- [Immunohistochemistry](#)
- [Immunofluorescence](#)
- [Immunoprecipitation](#)
- [Flow Cytometry](#)
- [Cell Culture](#)

HSPBAP1 antibody - middle region - Images

HSPBAP1 antibody - middle region (AI10096) in Human Brain cells using Western Blot

WB Suggested Anti-HSPBAP1 Antibody Titration: 0.2-1 µg/ml

ELISA Titer: 1:312500

Positive Control: Human brain

HSPBAP1 antibody - middle region - Background

This is a rabbit polyclonal antibody against HSPBAP1. It was validated on Western Blot using a cell lysate as a positive control. Abgent strives to provide antibodies covering each member of a whole protein family of your interest. We also use our best efforts to provide you antibodies recognize various epitopes of a target protein. For availability of antibody needed for your experiment, please inquire (sales@abgent.com).