

MLL4 antibody - N-terminal region
Rabbit Polyclonal Antibody
Catalog # AI10100**Specification**

MLL4 antibody - N-terminal region - Product Information

Application	WB
Primary Accession	O9UMN6
Other Accession	O9UMN6-2
Reactivity	Human, Mouse, Rat, Rabbit, Pig, Dog, Guinea Pig, Horse, Bovine, Yeast
Predicted Host	Human, Mouse, Rat
Clonality	Rabbit
Calculated MW	Polyclonal 64 kDa KDa

MLL4 antibody - N-terminal region - Additional Information**Gene ID 9757**Alias Symbol **HRX2, MLL2, TRX2, WBP7, MLL4****Other Names**

Histone-lysine N-methyltransferase 2B, Lysine N-methyltransferase 2B, Myeloid/lymphoid or mixed-lineage leukemia protein 4, Trithorax homolog 2, WW domain-binding protein 7, WBP-7, KMT2B, HRX2, KIAA0304, MLL2, MLL4, TRX2, WBP7

Target/Specificity

MLL4 a protein which contains multiple domains including a CXXC zinc finger, three PHD zinc fingers, two FY-rich domains, and a SET (suppressor of variegation, enhancer of zeste, and trithorax) domain. The SET domain is a conserved C-terminal domain that characterizes proteins of the MLL (mixed-lineage leukemia) family. MLL4 is ubiquitously expressed in adult tissues. It is also amplified in solid tumor cell lines, and may be involved in human cancer

Format

Liquid. Purified antibody supplied in 1x PBS buffer with 0.09% (w/v) sodium azide and 2% sucrose.

Reconstitution & Storage

Add 100 ul of distilled water. Final anti-MLL4 antibody concentration is 1 mg/ml in PBS buffer with 2% sucrose. For longer periods of storage, store at -20°C. Avoid repeat freeze-thaw cycles.

Precautions

MLL4 antibody - N-terminal region is for research use only and not for use in diagnostic or therapeutic procedures.

MLL4 antibody - N-terminal region - Protein Information**Name** KMT2B

Synonyms HRX2, KIAA0304, MLL2, MLL4, TRX2, WBP7

Function

Histone methyltransferase that catalyzes methyl group transfer from S-adenosyl-L-methionine to the epsilon-amino group of 'Lys-4' of histone H3 (H3K4) via a non-processive mechanism. Part of chromatin remodeling machinery predominantly forms H3K4me1 and H3K4me2 methylation marks at active chromatin sites where transcription and DNA repair take place (PubMed:25561738, PubMed:17707229). Likely plays a redundant role with KMT2C in enriching H3K4me1 marks on primed and active enhancer elements (PubMed:24081332). Plays a central role in beta-globin locus transcription regulation by being recruited by NFE2 (PubMed:17707229). Plays an important role in controlling bulk H3K4me during oocyte growth and preimplantation development (By similarity). Required during the transcriptionally active period of oocyte growth for the establishment and/or maintenance of bulk H3K4 trimethylation (H3K4me3), global transcriptional silencing that precedes resumption of meiosis, oocyte survival and normal zygotic genome activation (By similarity).

Cellular Location

Nucleus.

Tissue Location

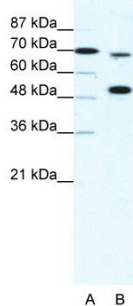
Widely expressed. Highest levels in testis. Also found in brain with higher expression in the cerebellum than in any other region, bone marrow, heart, muscle, kidney, placenta, spleen, thymus, prostate, ovary, intestine, colon, peripheral blood lymphocytes and pancreas. Often amplified in pancreatic carcinomas

MLL4 antibody - N-terminal region - Protocols

Provided below are standard protocols that you may find useful for product applications.

- [Western Blot](#)
- [Blocking Peptides](#)
- [Dot Blot](#)
- [Immunohistochemistry](#)
- [Immunofluorescence](#)
- [Immunoprecipitation](#)
- [Flow Cytometry](#)
- [Cell Culture](#)

MLL4 antibody - N-terminal region - Images



MLL4 antibody - N-terminal region (AI10100) in Human HepG2 cells using Western Blot
WB Suggested Anti-MLL4 Antibody Titration: 5µg/ml
Positive Control: HepG2 cell lysate
KMT2B is strongly supported by BioGPS gene expression data to be expressed in Human HepG2 cells

MLL4 antibody - N-terminal region - Background

This is a rabbit polyclonal antibody against MLL4. It was validated on Western Blot using a cell lysate as a positive control. Abgent strives to provide antibodies covering each member of a whole protein family of your interest. We also use our best efforts to provide you antibodies recognize various epitopes of a target protein. For availability of antibody needed for your experiment, please inquire (sales@abgent.com).