

PARP6 antibody - N-terminal region
Rabbit Polyclonal Antibody
Catalog # AI10106**Specification**

PARP6 antibody - N-terminal region - Product Information

Application	WB
Primary Accession	Q2NL67
Other Accession	Q2NL67 , NP_064599 , NM_020214
Reactivity	Human, Mouse, Rat, Rabbit, Zebrafish, Pig, Dog, Guinea Pig, Horse, Bovine
Predicted	Human, Mouse, Rat, Rabbit, Zebrafish, Pig, Chicken, Dog, Guinea Pig, Horse, Bovine
Host	Rabbit
Clonality	Polyclonal
Calculated MW	71 kDa KDa

PARP6 antibody - N-terminal region - Additional Information**Gene ID** 56965**Alias Symbol** **MGC131971, pART17****Other Names**

Poly [ADP-ribose] polymerase 6, PARP-6, ADP-ribosyltransferase diphtheria toxin-like 17, ARTD17, PARP6

Target/Specificity

Poly(ADP-ribose) polymerases (PARPs) constitute a large family of 18 proteins, encoded by different genes and displaying a conserved catalytic domain. They are involved in DNA-damage-dependent post-translational modification of histones and other nuclear proteins that contributes to the survival of injured proliferating cells.

Format

Liquid. Purified antibody supplied in 1x PBS buffer with 0.09% (w/v) sodium azide and 2% sucrose.

Reconstitution & Storage

Add 50 ul of distilled water. Final anti-PARP6 antibody concentration is 1 mg/ml in PBS buffer with 2% sucrose. For longer periods of storage, store at -20°C. Avoid repeat freeze-thaw cycles.

Precautions

PARP6 antibody - N-terminal region is for research use only and not for use in diagnostic or therapeutic procedures.

PARP6 antibody - N-terminal region - Protein Information**Name** PARP6 ([HGNC:26921](#))**Function**

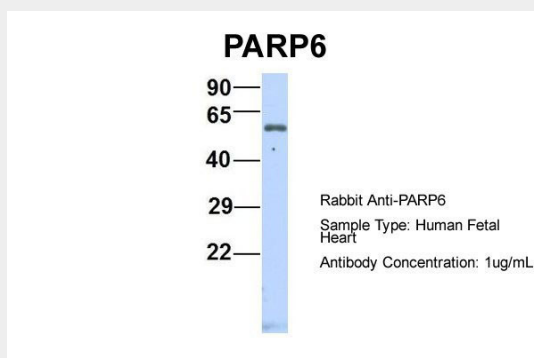
Mono-ADP-ribosyltransferase that mediates mono-ADP- ribosylation of target proteins.

PARP6 antibody - N-terminal region - Protocols

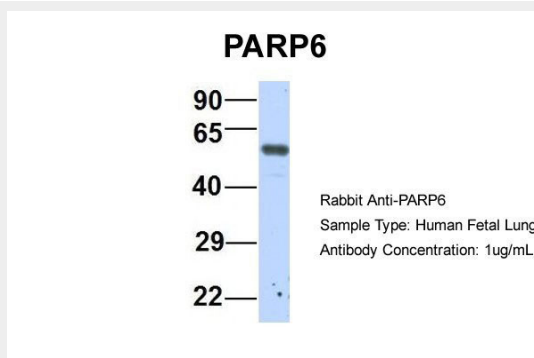
Provided below are standard protocols that you may find useful for product applications.

- [Western Blot](#)
- [Blocking Peptides](#)
- [Dot Blot](#)
- [Immunohistochemistry](#)
- [Immunofluorescence](#)
- [Immunoprecipitation](#)
- [Flow Cytometry](#)
- [Cell Culture](#)

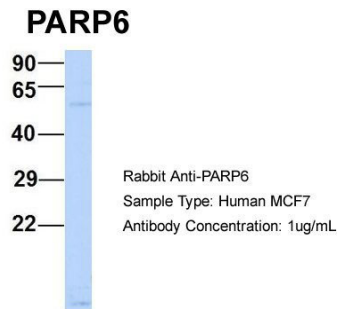
PARP6 antibody - N-terminal region - Images



PARP6 antibody - N-terminal region (AI10106) in Hum. Fetal Heart cells using Western Blot
Host:Rabbit
Target Name:PARP6
Sample Tissue:Human Fetal Heart
Antibody Dilution: 1.0µg/ml



PARP6 antibody - N-terminal region (AI10106) in Hum. Fetal Lung cells using Western Blot
Host:Rabbit
Target Name:PARP6
Sample Tissue:Human Fetal Lung
Antibody Dilution: 1.0µg/ml



PARP6 antibody - N-terminal region (AI10106) in Human MCF7 cells using Western Blot

Host:Rabbit

Target Name:PARP6

Sample Tissue:Human MCF7

Antibody Dilution: 1.0µg/mL PARP6 is supported by BioGPS gene expression data to be expressed in MCF7



PARP6 antibody - N-terminal region (AI10106) in Human 721_B cells using Western Blot

WB Suggested Anti-PARP6 Antibody Titration: 0.2-1 µg/ml

ELISA Titer: 1:12500

Positive Control: 721_B cell lysate

PARP6 antibody - N-terminal region - Background

This is a rabbit polyclonal antibody against PARP6. It was validated on Western Blot by Abgent. At Abgent we manufacture rabbit polyclonal antibodies on a large scale (200-1000 products/month) of high throughput manner. Our antibodies are peptide based and protein family oriented. We usually provide antibodies covering each member of a whole protein family of your interest. We also use our best efforts to provide you antibodies recognize various epitopes of a target protein. For availability of antibody needed for your experiment, please inquire (sales@abgent.com).