

USE1 antibody - middle region
Rabbit Polyclonal Antibody
Catalog # AI10112**Specification**

USE1 antibody - middle region - Product Information

Application	WB, IHC
Primary Accession	O9NZ43
Other Accession	O9NZ43 , NP_060937 , NM_018467
Reactivity	Human, Mouse, Rat, Zebrafish, Dog, Guinea Pig, Horse, Bovine
Predicted	Human, Mouse, Rat, Zebrafish, Pig, Chicken, Dog, Guinea Pig, Bovine
Host	Rabbit
Clonality	Polyclonal
Calculated MW	29 kDa KDa

USE1 antibody - middle region - Additional Information**Gene ID** 55850**Alias Symbol** MDS032, SLT1, p31, P31**Other Names**

Vesicle transport protein USE1, Putative MAPK-activating protein PM26, USE1-like protein, p31, USE1, USE1L

Target/Specificity

MDS032 belongs to the USE1 family and is a component of a SNARE complex which may be involved in targeting and fusion of Golgi-derived retrograde transport vesicles with the ER.

Format

Liquid. Purified antibody supplied in 1x PBS buffer with 0.09% (w/v) sodium azide and 2% sucrose.

Reconstitution & Storage

Add 50 ul of distilled water. Final anti-USE1 antibody concentration is 1 mg/ml in PBS buffer with 2% sucrose. For longer periods of storage, store at -20°C. Avoid repeat freeze-thaw cycles.

Precautions

USE1 antibody - middle region is for research use only and not for use in diagnostic or therapeutic procedures.

USE1 antibody - middle region - Protein Information**Name** USE1**Synonyms** USE1L**Function**

SNARE that may be involved in targeting and fusion of Golgi- derived retrograde transport vesicles with the ER.

Cellular Location

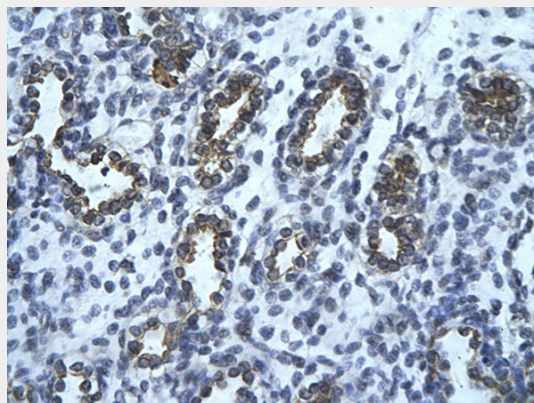
Endoplasmic reticulum membrane; Single-pass type IV membrane protein

USE1 antibody - middle region - Protocols

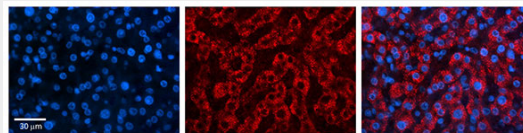
Provided below are standard protocols that you may find useful for product applications.

- [Western Blot](#)
- [Blocking Peptides](#)
- [Dot Blot](#)
- [Immunohistochemistry](#)
- [Immunofluorescence](#)
- [Immunoprecipitation](#)
- [Flow Cytometry](#)
- [Cell Culture](#)

USE1 antibody - middle region - Images



Human Lung
Rabbit Anti-USE1 Antibody
Paraffin Embedded Tissue: Human alveolar cell
Cellular Data: Epithelial cells of renal tubule
Antibody Concentration: 4.0-8.0 µg/ml
Magnification: 400X



USE1 antibody - middle region (AI10112) in Human Liver Tissue cells using Immunohistochemistry
USE1 antibody - middle region (AI10112)
Catalog Number: AI10112
Formalin Fixed Paraffin Embedded Tissue: Human Liver Tissue
Observed Staining: Cytoplasm in hepatocytes
Primary Antibody
Concentration: 1:100

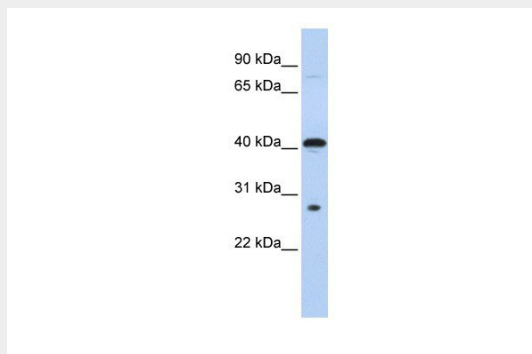
Secondary Antibody: Donkey anti-Rabbit-Cy3

Secondary Antibody

Concentration: 1:200

Magnification: 20X

Exposure Time: 0.5 - 2.0 sec



USE1 antibody - middle region (AI10112) in Human 721_B cells using Western Blot

WB Suggested Anti-USE1 Antibody Titration: 0.2-1 μ g/ml

ELISA Titer: 1:62500

Positive Control: 721_B cell lysate

USE1 is supported by BioGPS gene expression data to be expressed in 721_B

USE1 antibody - middle region - Background

This is a rabbit polyclonal antibody against USE1. It was validated on Western Blot using a cell lysate as a positive control. Abgent strives to provide antibodies covering each member of a whole protein family of your interest. We also use our best efforts to provide you antibodies recognize various epitopes of a target protein. For availability of antibody needed for your experiment, please inquire (sales@abgent.com).