

ENC1 antibody - N-terminal region
Rabbit Polyclonal Antibody
Catalog # AI10115**Specification**

ENC1 antibody - N-terminal region - Product Information

Application	WB
Primary Accession	O14682
Other Accession	O14682 , NP_003624 , NM_003633
Reactivity	Human, Mouse, Rat, Rabbit, Zebrafish, Pig, Dog, Guinea Pig, Horse, Bovine
Predicted	Human, Mouse, Rat, Rabbit, Zebrafish, Pig, Chicken, Dog, Horse, Bovine
Host	Rabbit
Clonality	Polyclonal
Calculated MW	66 kDa KDa

ENC1 antibody - N-terminal region - Additional Information**Gene ID** 8507**Alias Symbol** CCL28, ENC-1, FLJ39259, KLHL35, NRPB, PIG10, TP53I10, KLHL37**Other Names**

Ectoderm-neural cortex protein 1, ENC-1, Kelch-like protein 37, Nuclear matrix protein NRP/B, p53-induced gene 10 protein, ENC1, KLHL37, NRPB, PIG10

Target/Specificity

ENC1 encodes an actin-binding protein, which is involved in the regulation of neuronal process formation and in differentiation of neural crest cells. May be down-regulated in neuroblastoma tumors. Substrate-specific adapter of an E3 ubiquitin-protein ligase

Format

Liquid. Purified antibody supplied in 1x PBS buffer with 0.09% (w/v) sodium azide and 2% sucrose.

Reconstitution & Storage

Add 50 ul of distilled water. Final anti-ENC1 antibody concentration is 1 mg/ml in PBS buffer with 2% sucrose. For longer periods of storage, store at -20°C. Avoid repeat freeze-thaw cycles.

Precautions

ENC1 antibody - N-terminal region is for research use only and not for use in diagnostic or therapeutic procedures.

ENC1 antibody - N-terminal region - Protein Information**Name** ENC1**Synonyms** KLHL37, NRPB, PIG10

Function

Actin-binding protein involved in the regulation of neuronal process formation and in differentiation of neural crest cells. Down- regulates transcription factor NF2L2/NRF2 by decreasing the rate of protein synthesis and not via a ubiquitin-mediated proteasomal degradation mechanism.

Cellular Location

Nucleus matrix. Cytoplasm. Cytoplasm, cytoskeleton

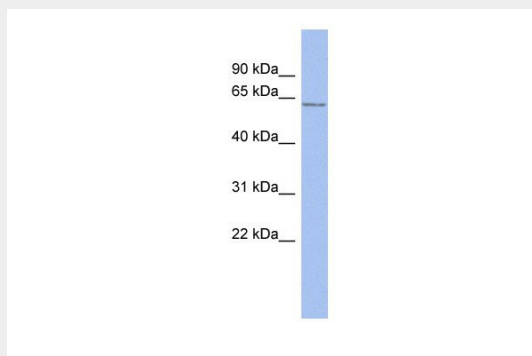
Tissue Location

Detected in fetal brain tissue, moderate expression in fetal heart, lung and kidney. Highly expressed in adult brain, particularly high in the hippocampus and amygdala, and spinal cord. Detectable in adult pancreas. May be down-regulated in neuroblastoma tumors

ENC1 antibody - N-terminal region - Protocols

Provided below are standard protocols that you may find useful for product applications.

- [Western Blot](#)
- [Blocking Peptides](#)
- [Dot Blot](#)
- [Immunohistochemistry](#)
- [Immunofluorescence](#)
- [Immunoprecipitation](#)
- [Flow Cytometry](#)
- [Cell Culture](#)

ENC1 antibody - N-terminal region - Images

ENC1 antibody - N-terminal region (AI10115) in Human ACHN cells using Western Blot
WB Suggested Anti-ENC1 Antibody Titration: 0.2-1 µg/ml
ELISA Titer: 1:12500
Positive Control: ACHN cell lysate

ENC1 antibody - N-terminal region - Background

This is a rabbit polyclonal antibody against ENC1. It was validated on Western Blot using a cell lysate as a positive control. Abgent strives to provide antibodies covering each member of a whole protein family of your interest. We also use our best efforts to provide you antibodies recognize various epitopes of a target protein. For availability of antibody needed for your experiment, please inquire (sales@abgent.com).