

**CRSP6 antibody - N-terminal region**  
**Rabbit Polyclonal Antibody**  
**Catalog # AI10116****Specification**

---

**CRSP6 antibody - N-terminal region - Product Information**

Application	IHC, CHIP, WB
Primary Accession	<a href="#">O9NVC6</a>
Other Accession	<a href="#">O9NVC6</a> , <a href="#">NP_004259</a> , <a href="#">NM_004268</a>
Reactivity	Human, Mouse, Rat, Rabbit, Pig, Dog, Guinea Pig, Horse, Bovine
Predicted Host	Human, Mouse, Rat, Chicken, Dog, Bovine
Clonality	Rabbit
Calculated MW	Polyclonal 73 kDa KDa

**CRSP6 antibody - N-terminal region - Additional Information****Gene ID** 9440**Alias Symbol** **CRSP6, CRSP77, DRIP80, TRAP80**  
**Other Names**

Mediator of RNA polymerase II transcription subunit 17, Activator-recruited cofactor 77 kDa component, ARC77, Cofactor required for Sp1 transcriptional activation subunit 6, CRSP complex subunit 6, Mediator complex subunit 17, Thyroid hormone receptor-associated protein complex 80 kDa component, Trap80, Transcriptional coactivator CRSP77, Vitamin D3 receptor-interacting protein complex 80 kDa component, DRIP80, MED17, ARC77, CRSP6, DRIP77, DRIP80, TRAP80

**Target/Specificity**

The activation of gene transcription is a multistep process that is triggered by factors that recognize transcriptional enhancer sites in DNA. These factors work with co-activators to direct transcriptional initiation by the RNA polymerase II apparatus. The protein encoded by CRSP6 is a subunit of the CRSP (cofactor required for SP1 activation) complex, which, along with TFIID, is required for efficient activation by SP1. This protein is also a component of other multisubunit complexes e.g. thyroid hormone receptor-(TR-) associated proteins which interact with TR and facilitate TR function on DNA templates in conjunction with initiation factors and cofactors.

**Format**

Liquid. Purified antibody supplied in 1x PBS buffer with 0.09% (w/v) sodium azide and 2% sucrose.

**Reconstitution & Storage**

Add 50 ul of distilled water. Final anti-CRSP6 antibody concentration is 1 mg/ml in PBS buffer with 2% sucrose. For longer periods of storage, store at -20°C. Avoid repeat freeze-thaw cycles.

**Precautions**

CRSP6 antibody - N-terminal region is for research use only and not for use in diagnostic or therapeutic procedures.

**CRSP6 antibody - N-terminal region - Protein Information**

**Name** MED17

**Synonyms** ARC77, CRSP6, DRIP77, DRIP80, TRAP80

**Function**

Component of the Mediator complex, a coactivator involved in the regulated transcription of nearly all RNA polymerase II-dependent genes. Mediator functions as a bridge to convey information from gene-specific regulatory proteins to the basal RNA polymerase II transcription machinery. Mediator is recruited to promoters by direct interactions with regulatory proteins and serves as a scaffold for the assembly of a functional preinitiation complex with RNA polymerase II and the general transcription factors.

**Cellular Location**

Nucleus.

**Tissue Location**

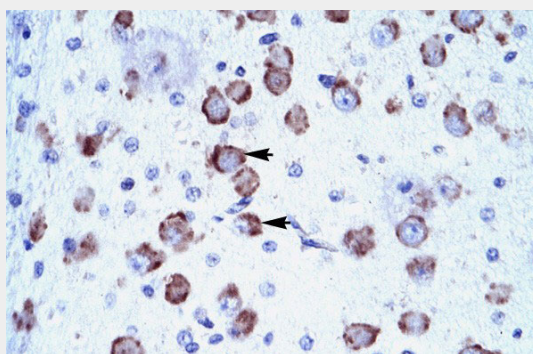
Ubiquitous..

**CRSP6 antibody - N-terminal region - Protocols**

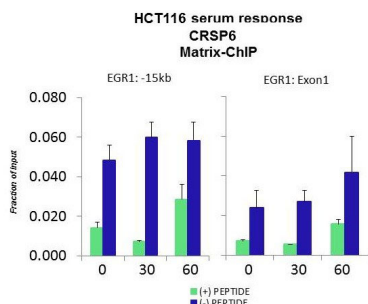
Provided below are standard protocols that you may find useful for product applications.

- [Western Blot](#)
- [Blocking Peptides](#)
- [Dot Blot](#)
- [Immunohistochemistry](#)
- [Immunofluorescence](#)
- [Immunoprecipitation](#)
- [Flow Cytometry](#)
- [Cell Culture](#)

**CRSP6 antibody - N-terminal region - Images**

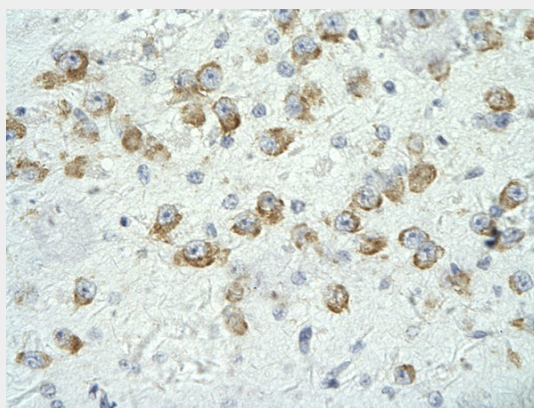


CRSP6 antibody - N-terminal region (AI10116) in Human Brain cells using Immunohistochemistry  
Human Brain



CRSP6 antibody - N-terminal region (AI10116) in HCT116 using CHIP

Quiescent human colon carcinoma HCT116 cultures were treated with 10% FBS for three time points (0, 15, 30min) or (0, 30, 60min) were used in Matrix-ChIP and real-time PCR assays at EGR1 gene (Exon1) and 15kb upstream site.



Human Brain

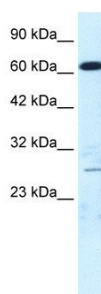
Rabbit Anti-MED17 Antibody

Paraffin Embedded Tissue: Human neural cell

Cellular Data: Epithelial cells of renal tubule

Antibody Concentration: 4.0-8.0 µg/ml

Magnification: 400X



CRSP6 antibody - N-terminal region (AI10116) in Human HepG2 cells using Western Blot

WB Suggested Anti-CRSP6 Antibody Titration: 0.2-1 µg/ml

ELISA Titer: 1:12500

Positive Control: HepG2 cell lysate

MED17 is supported by BioGPS gene expression data to be expressed in HepG2

### CRSP6 antibody - N-terminal region - Background

This is a rabbit polyclonal antibody against CRSP6. It was validated on Western Blot and

immunohistochemistry by Abgent. At Abgent we manufacture rabbit polyclonal antibodies on a large scale (200-1000 products/month) of high throughput manner. Our antibodies are peptide based and protein family oriented. We usually provide antibodies covering each member of a whole protein family of your interest. We also use our best efforts to provide you antibodies recognize various epitopes of a target protein. For availability of antibody needed for your experiment, please inquire ([sales@abgent.com](mailto:sales@abgent.com)).