

MLLT4 antibody - N-terminal region
Rabbit Polyclonal Antibody
Catalog # AI10119**Specification**

MLLT4 antibody - N-terminal region - Product Information

Application	WB
Primary Accession	P55196
Other Accession	P55196 , EAW47480 , NM_001040000
Reactivity	Human, Mouse, Rat, Rabbit, Zebrafish, Pig, Dog, Guinea Pig, Horse, Bovine, Yeast
Predicted	Human, Mouse, Rat, Zebrafish, Chicken, Dog, Horse, Bovine
Host	Rabbit
Clonality	Polyclonal
Calculated MW	74 kDa kDa

MLLT4 antibody - N-terminal region - Additional Information**Gene ID** 4301**Alias Symbol** **RP3-470B24.4, AF-6, AF6, AFADIN, FLJ34371, RP3-431P23.3****Other Names**

Afadin, ALL1-fused gene from chromosome 6 protein, Protein AF-6, MLLT4, AF6

Target/Specificity

AF6 is a Ras target that regulates cell-cell adhesions downstream of Ras activation. It is fused with MLL in leukemias caused by t(6, 11) translocations.

Format

Liquid. Purified antibody supplied in 1x PBS buffer with 0.09% (w/v) sodium azide and 2% sucrose.

Reconstitution & Storage

Add 100 ul of distilled water. Final anti-MLLT4 antibody concentration is 1 mg/ml in PBS buffer with 2% sucrose. For longer periods of storage, store at -20°C. Avoid repeat freeze-thaw cycles.

Precautions

MLLT4 antibody - N-terminal region is for research use only and not for use in diagnostic or therapeutic procedures.

MLLT4 antibody - N-terminal region - Protein Information**Name** AFDN ([HGNC:7137](#))**Synonyms** AF6, MLLT4**Function**

Belongs to an adhesion system, probably together with the E-cadherin-catenin system, which plays a role in the organization of homotypic, interneuronal and heterotypic cell-cell adherens junctions (AJs) (By similarity). Nectin- and actin-filament-binding protein that connects nectin to the actin cytoskeleton (PubMed: [11024295](http://www.uniprot.org/citations/11024295)). May play a key role in the organization of epithelial structures of the embryonic ectoderm (By similarity). Essential for the organization of adherens junctions (PubMed: [30463011](http://www.uniprot.org/citations/30463011)).

Cellular Location

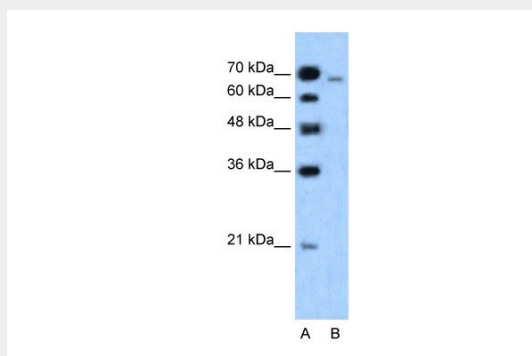
Cell junction, adherens junction. Note=Not found at cell-matrix AJs
{ECO:0000250|UniProtKB:O35889}

MLLT4 antibody - N-terminal region - Protocols

Provided below are standard protocols that you may find useful for product applications.

- [Western Blot](#)
- [Blocking Peptides](#)
- [Dot Blot](#)
- [Immunohistochemistry](#)
- [Immunofluorescence](#)
- [Immunoprecipitation](#)
- [Flow Cytometry](#)
- [Cell Culture](#)

MLLT4 antibody - N-terminal region - Images



MLLT4 antibody - N-terminal region (AI10119) in Human HepG2 cells using Western Blot

WB Suggested Anti-MLLT4 Antibody Titration: 1.25µg/ml

ELISA Titer: 1:312500

Positive Control: HepG2 cell lysate

MLLT4 is strongly supported by BioGPS gene expression data to be expressed in Human HepG2 cells

MLLT4 antibody - N-terminal region - Background

This is a rabbit polyclonal antibody against MLLT4. It was validated on Western Blot using a cell lysate as a positive control. Abgent strives to provide antibodies covering each member of a whole protein family of your interest. We also use our best efforts to provide you antibodies recognize various epitopes of a target protein. For availability of antibody needed for your experiment, please inquire (sales@abgent.com).