

AFF2 antibody - N-terminal region
Rabbit Polyclonal Antibody
Catalog # AI10120**Specification**

AFF2 antibody - N-terminal region - Product Information

Application	WB
Primary Accession	P51816
Other Accession	P51816 , NP_002016 , NM_002025
Reactivity	Human, Mouse, Rat, Rabbit, Zebrafish, Pig, Dog, Guinea Pig, Horse, Bovine
Predicted	Human, Mouse, Rat, Rabbit, Pig, Guinea Pig, Horse, Bovine
Host	Rabbit
Clonality	Polyclonal
Calculated MW	145 kDa KDa

AFF2 antibody - N-terminal region - Additional Information**Gene ID** 2334**Alias Symbol** **FMR2, FRAXE, MRX2, OX19, FMR2P****Other Names**

AF4/FMR2 family member 2, Fragile X E mental retardation syndrome protein, Fragile X mental retardation 2 protein, FMR2P, Protein FMR-2, Protein Ox19, AFF2, FMR2, OX19

Target/Specificity

AFF2 belongs to the AF4 family. Defects in AFF2 are the cause of FRAXE. The exact function of AFF2 remains unknown.

Format

Liquid. Purified antibody supplied in 1x PBS buffer with 0.09% (w/v) sodium azide and 2% sucrose.

Reconstitution & Storage

Add 50 ul of distilled water. Final anti-AFF2 antibody concentration is 1 mg/ml in PBS buffer with 2% sucrose. For longer periods of storage, store at -20°C. Avoid repeat freeze-thaw cycles.

Precautions

AFF2 antibody - N-terminal region is for research use only and not for use in diagnostic or therapeutic procedures.

AFF2 antibody - N-terminal region - Protein Information**Name** AFF2 ([HGNC:3776](#))**Synonyms** FMR2, OX19**Function**

RNA-binding protein. Might be involved in alternative splicing regulation through an interaction with G-quartet RNA structure.

Cellular Location

Nucleus speckle. Note=When splicing is inhibited, accumulates in enlarged speckles

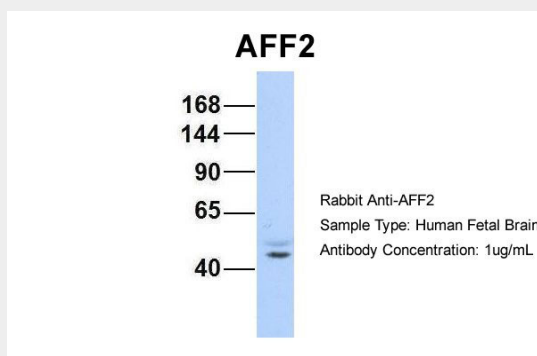
Tissue Location

Brain (most abundant in hippocampus and amygdala), placenta and lung

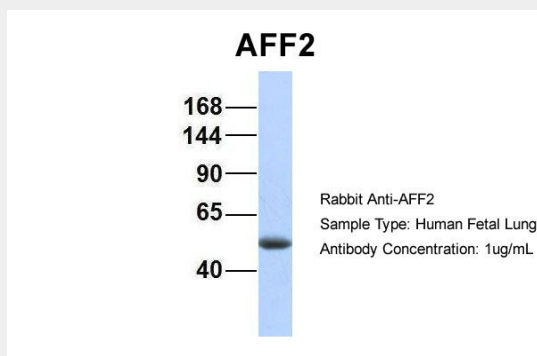
AFF2 antibody - N-terminal region - Protocols

Provided below are standard protocols that you may find useful for product applications.

- [Western Blot](#)
- [Blocking Peptides](#)
- [Dot Blot](#)
- [Immunohistochemistry](#)
- [Immunofluorescence](#)
- [Immunoprecipitation](#)
- [Flow Cytometry](#)
- [Cell Culture](#)

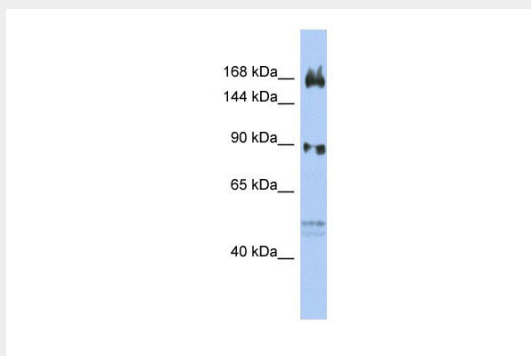
AFF2 antibody - N-terminal region - Images

AFF2 antibody - N-terminal region (AI10120) in Hum. Fetal Brain cells using Western Blot
Host:Rabbit
Target Name:AFF2
Sample Tissue:Human Fetal Brain
Antibody Dilution: 1.0µg/ml



AFF2 antibody - N-terminal region (AI10120) in Hum. Fetal Lung cells using Western Blot

Host: Rabbit
Target Name: AFF2
Sample Tissue: Human Fetal Lung
Antibody Dilution: 1.0 µg/ml



AFF2 antibody - N-terminal region (AI10120) in Human OVCAR3 cells using Western Blot

WB Suggested Anti-AFF2 Antibody Titration: 0.2-1 µg/ml

ELISA Titer: 1:62500

Positive Control: OVCAR-3 cell lysate

AFF2 is strongly supported by BioGPS gene expression data to be expressed in Human OVCAR3 cells

AFF2 antibody - N-terminal region - Background

This is a rabbit polyclonal antibody against AFF2. It was validated on Western Blot using a cell lysate as a positive control. Abgent strives to provide antibodies covering each member of a whole protein family of your interest. We also use our best efforts to provide you antibodies recognize various epitopes of a target protein. For availability of antibody needed for your experiment, please inquire (sales@abgent.com).