

NFRKB antibody - N-terminal region
Rabbit Polyclonal Antibody
Catalog # AI10122**Specification**

NFRKB antibody - N-terminal region - Product Information

Application	WB
Primary Accession	Q6P4R8
Other Accession	Q6P4R8 , NP_006156 , NM_006165
Reactivity	Human, Mouse, Rat, Rabbit, Pig, Dog, Guinea Pig, Horse, Bovine
Predicted	Human, Mouse, Rat, Rabbit, Dog, Guinea Pig, Horse, Bovine
Host	Rabbit
Clonality	Polyclonal
Calculated MW	142 kDa KDa

NFRKB antibody - N-terminal region - Additional Information**Gene ID** 4798**Alias Symbol** DKFZp547B2013, INO80G**Other Names**

Nuclear factor related to kappa-B-binding protein, DNA-binding protein R kappa-B, INO80 complex subunit G, NFRKB, INO80G

Target/Specificity

NFRKB binds to the DNA consensus sequence 5'-GGGGAATCTCC-3'.

Format

Liquid. Purified antibody supplied in 1x PBS buffer with 0.09% (w/v) sodium azide and 2% sucrose.

Reconstitution & Storage

Add 50 ul of distilled water. Final anti-NFRKB antibody concentration is 1 mg/ml in PBS buffer with 2% sucrose. For longer periods of storage, store at -20°C. Avoid repeat freeze-thaw cycles.

Precautions

NFRKB antibody - N-terminal region is for research use only and not for use in diagnostic or therapeutic procedures.

NFRKB antibody - N-terminal region - Protein Information**Name** NFRKB**Synonyms** INO80G**Function**

Binds to the DNA consensus sequence 5'-GGGGAATCTCC-3'.

Cellular Location

Nucleus.

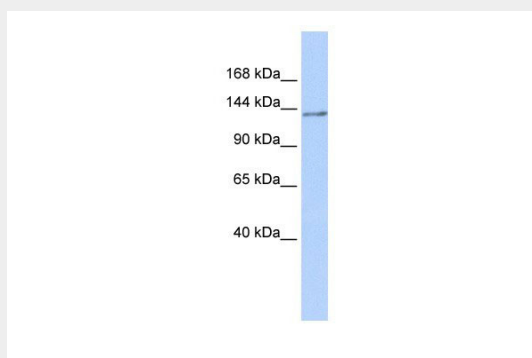
Tissue Location

Expressed in thymus, brain, testes, spleen and liver.

NFRKB antibody - N-terminal region - Protocols

Provided below are standard protocols that you may find useful for product applications.

- [Western Blot](#)
- [Blocking Peptides](#)
- [Dot Blot](#)
- [Immunohistochemistry](#)
- [Immunofluorescence](#)
- [Immunoprecipitation](#)
- [Flow Cytometry](#)
- [Cell Culture](#)

NFRKB antibody - N-terminal region - Images

NFRKB antibody - N-terminal region (AI10122) in Human Brain cells using Western Blot
WB Suggested Anti-NFRKB Antibody Titration: 0.2-1 µg/ml
ELISA Titer: 1:312500
Positive Control: Human brain

NFRKB antibody - N-terminal region - Background

This is a rabbit polyclonal antibody against NFRKB. It was validated on Western Blot using a cell lysate as a positive control. Abgent strives to provide antibodies covering each member of a whole protein family of your interest. We also use our best efforts to provide you antibodies recognize various epitopes of a target protein. For availability of antibody needed for your experiment, please inquire (sales@abgent.com).