

**ZFR antibody - middle region**  
**Rabbit Polyclonal Antibody**  
**Catalog # AI10134****Specification**

---

**ZFR antibody - middle region - Product Information**

Application	IHC, WB
Primary Accession	<a href="#">O96KR1</a>
Other Accession	<a href="#">O96KR1</a> , <a href="#">NP_057191</a> , <a href="#">NM_016107</a>
Reactivity	Human, Mouse, Rat, Rabbit, Zebrafish, Dog, Horse, Bovine
Predicted	Human, Mouse, Rat, Rabbit, Zebrafish, Dog, Horse, Bovine
Host	Rabbit
Clonality	Polyclonal
Calculated MW	117 kDa KDa

**ZFR antibody - middle region - Additional Information****Gene ID** 51663**Alias Symbol** **FLJ41312, ZFR1****Other Names**

Zinc finger RNA-binding protein, hZFR, M-phase phosphoprotein homolog, ZFR

**Target/Specificity**

ZFR is critical for Staufen 2 isoform specific nucleocytoplasmic shuttling in neurons.

**Format**

Liquid. Purified antibody supplied in 1x PBS buffer with 0.09% (w/v) sodium azide and 2% sucrose.

**Reconstitution & Storage**

Add 50 ul of distilled water. Final anti-ZFR antibody concentration is 1 mg/ml in PBS buffer with 2% sucrose. For longer periods of storage, store at -20°C. Avoid repeat freeze-thaw cycles.

**Precautions**

ZFR antibody - middle region is for research use only and not for use in diagnostic or therapeutic procedures.

**ZFR antibody - middle region - Protein Information****Name** ZFR**Function**

Involved in postimplantation and gastrulation stages of development. Involved in the nucleocytoplasmic shuttling of STAU2. Binds to DNA and RNA (By similarity).

**Cellular Location**

Nucleus. Cytoplasm. Cytoplasmic granule. Chromosome Note=Associated with chromosome foci in meiotic cells. Localizes in somatodendritic compartment of primary hippocampal neurons. Colocalizes with STAU2 in several cytosolic RNA granules (By similarity)

#### **Tissue Location**

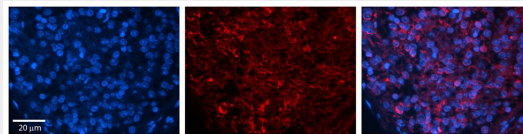
Expressed in lung, liver, lymphocytes, heart, pancreas, placenta, brain and kidney.

#### **ZFR antibody - middle region - Protocols**

Provided below are standard protocols that you may find useful for product applications.

- [Western Blot](#)
- [Blocking Peptides](#)
- [Dot Blot](#)
- [Immunohistochemistry](#)
- [Immunofluorescence](#)
- [Immunoprecipitation](#)
- [Flow Cytometry](#)
- [Cell Culture](#)

#### **ZFR antibody - middle region - Images**



Rabbit Anti-ZFR Antibody (AI10134) ) in Human Pineal Tissue using Immunohistochemistry

Rabbit Anti-ZFR Antibody

Catalog Number: AI10134

Formalin Fixed Paraffin Embedded Tissue: Human Pineal Tissue Observed Staining: Cytoplasmic and nuclear in pinelocytes & interstitial cells

Primary Antibody

Concentration: 1:100 Other Working Concentrations: 1/600

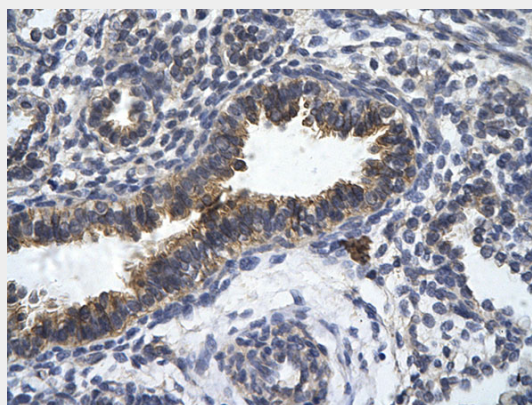
Secondary Antibody: Donkey anti-Rabbit-Cy3

Secondary Antibody

Concentration: 1:200

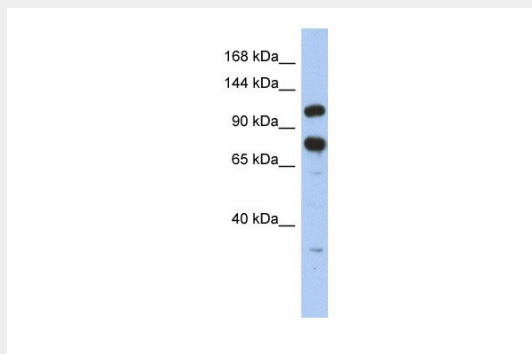
Magnification: 20X

Exposure Time: 0.5 - 2.0 sec



Human Lung

Rabbit Anti-ZFR Antibody  
Paraffin Embedded Tissue: Human bronchiole epithelium  
Cellular Data: Epithelial cells of renal tubule  
Antibody Concentration: 4.0-8.0 µg/ml  
Magnification: 400X



ZFR antibody - middle region (AI10134) in Human HT1080 cells using Western Blot  
WB Suggested Anti-ZFR Antibody Titration: 0.2-1 µg/ml  
ELISA Titer: 1:62500  
Positive Control: HT1080 cell lysate  
ZFR is strongly supported by BioGPS gene expression data to be expressed in Human HT1080 cells

#### **ZFR antibody - middle region - Background**

This is a rabbit polyclonal antibody against ZFR. It was validated on Western Blot using a cell lysate as a positive control. Abgent strives to provide antibodies covering each member of a whole protein family of your interest. We also use our best efforts to provide you antibodies recognize various epitopes of a target protein. For availability of antibody needed for your experiment, please inquire ([sales@abgent.com](mailto:sales@abgent.com)).