

PHF21A antibody - middle region
Rabbit Polyclonal Antibody
Catalog # AI10137**Specification**

PHF21A antibody - middle region - Product Information

Application	WB
Primary Accession	O96BD5
Other Accession	O96BD5-2 , NP_057705 , NM_016621
Reactivity	Human, Rat, Rabbit, Dog, Guinea Pig, Horse, Bovine
Predicted Host	Rat, Pig, Dog, Guinea Pig, Horse, Bovine
Clonality	Rabbit
Calculated MW	Polyclonal 70 kDa KDa

PHF21A antibody - middle region - Additional Information**Gene ID** 51317**Alias Symbol** BHC80, BM-006, KIAA1696**Other Names**

PHD finger protein 21A, BHC80a, BRAF35-HDAC complex protein BHC80, PHF21A, BHC80, KIAA1696

Target/Specificity

PHF21A (BHC80) is a component of a BRAF35/histone deacetylase complex (BHC) that mediates repression of neuron-specific genes through the cis-regulatory element known as repressor element-1 (RE1) or neural restrictive silencer (NRS). BHC80 is a component of a BRAF35 (MIM 605535)/histone deacetylase (HDAC, see MIM 601241) complex (BHC) that mediates repression of neuron-specific genes through the cis-regulatory element known as repressor element-1 (RE1) or neural restrictive silencer (NRS) (Hakimi et al., 2002 [PubMed 12032298]). [supplied by OMIM].

Format

Liquid. Purified antibody supplied in 1x PBS buffer with 0.09% (w/v) sodium azide and 2% sucrose.

Reconstitution & Storage

Add 50 ul of distilled water. Final anti-PHF21A antibody concentration is 1 mg/ml in PBS buffer with 2% sucrose. For longer periods of storage, store at -20°C. Avoid repeat freeze-thaw cycles.

Precautions

PHF21A antibody - middle region is for research use only and not for use in diagnostic or therapeutic procedures.

PHF21A antibody - middle region - Protein Information**Name** PHF21A

Synonyms BHC80, KIAA1696

Function

Component of the BHC complex, a corepressor complex that represses transcription of neuron-specific genes in non-neuronal cells. The BHC complex is recruited at RE1/NRSE sites by REST and acts by deacetylating and demethylating specific sites on histones, thereby acting as a chromatin modifier. In the BHC complex, it may act as a scaffold. Inhibits KDM1A-mediated demethylation of 'Lys-4' of histone H3 in vitro, suggesting a role in demethylation regulation.

Cellular Location

Nucleus.

Tissue Location

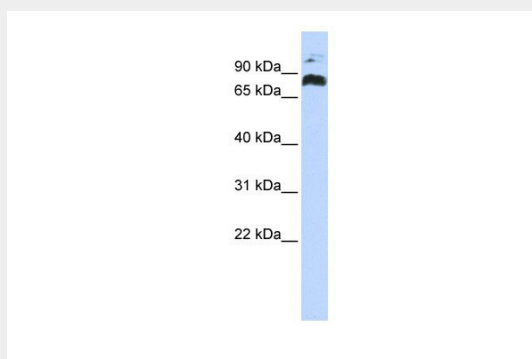
Highly expressed in brain (PubMed:31649809). Expressed at lower level in other tissues, including heart, kidney, liver, lung and skeletal muscle (PubMed:31649809). Abundantly expressed in fetal brain (PubMed:31649809).

PHF21A antibody - middle region - Protocols

Provided below are standard protocols that you may find useful for product applications.

- [Western Blot](#)
- [Blocking Peptides](#)
- [Dot Blot](#)
- [Immunohistochemistry](#)
- [Immunofluorescence](#)
- [Immunoprecipitation](#)
- [Flow Cytometry](#)
- [Cell Culture](#)

PHF21A antibody - middle region - Images



PHF21A antibody - middle region (AI10137) in Human Jurkat cells using Western Blot
WB Suggested Anti-PHF21A Antibody Titration: 0.2-1 µg/ml
ELISA Titer: 1:1562500
Positive Control: Jurkat cell lysate

PHF21A antibody - middle region - Background

This is a rabbit polyclonal antibody against PHF21A. It was validated on Western Blot using a cell lysate as a positive control. Abgent strives to provide antibodies covering each member of a whole protein family of your interest. We also use our best efforts to provide you antibodies recognize

various epitopes of a target protein. For availability of antibody needed for your experiment, please inquire (sales@abgent.com).