

Hand2 antibody - C-terminal region
Rabbit Polyclonal Antibody
Catalog # AI10185**Specification**

Hand2 antibody - C-terminal region - Product Information

| | |
|-------------------|---|
| Application | WB |
| Primary Accession | Q61039 |
| Other Accession | NM_010402 , NP_034532 |
| Reactivity | Human, Mouse, Rat, Zebrafish, Pig, Horse, Bovine, Dog |
| Predicted | Human, Mouse, Rat, Zebrafish, Pig, Chicken, Guinea Pig, Dog |
| Host | Rabbit |
| Clonality | Polyclonal |
| Calculated MW | 24kDa KDa |

Hand2 antibody - C-terminal region - Additional Information**Gene ID** 15111**Alias Symbol** AI225906, AI661148, Ehand2, Hed, Th2, Thing2, bHLHa26, dHAND**Other Names**

Heart- and neural crest derivatives-expressed protein 2, Deciduum, heart, autonomic nervous system and neural crest derivatives-expressed protein 2, dHAND, Helix-loop-helix transcription factor expressed in embryo and deciduum, Thing-2, Hand2, Dhand, Hed, Thing2

Format

Liquid. Purified antibody supplied in 1x PBS buffer with 0.09% (w/v) sodium azide and 2% sucrose.

Reconstitution & Storage

Add 50 ul of distilled water. Final anti-Hand2 antibody concentration is 1 mg/ml in PBS buffer with 2% sucrose. For longer periods of storage, store at 20°C. Avoid repeat freeze-thaw cycles.

Precautions

Hand2 antibody - C-terminal region is for research use only and not for use in diagnostic or therapeutic procedures.

Hand2 antibody - C-terminal region - Protein Information**Name** Hand2**Synonyms** Dhand, Hed, Thing2**Function**

Essential for cardiac morphogenesis, particularly for the formation of the right ventricle and of the aortic arch arteries. Required for vascular development and regulation of angiogenesis, possibly

through a VEGF signaling pathway. Also plays an important role in limb development, particularly in the establishment of anterior- posterior polarization, acting as an upstream regulator of sonic hedgehog (SHH) induction in the limb bud. Is involved in the development of branchial arches, which give rise to unique structures in the head and neck. Binds DNA on E-box consensus sequence 5'-CANNTG- 3'.

Cellular Location

Nucleus {ECO:0000255|PROSITE-ProRule:PRU00981}.

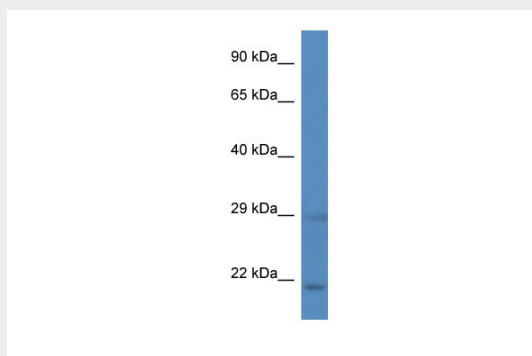
Tissue Location

Heart and aorta.

Hand2 antibody - C-terminal region - Protocols

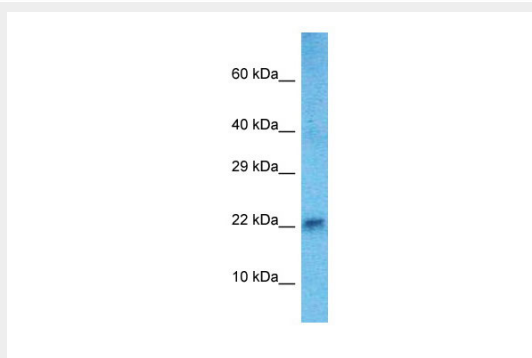
Provided below are standard protocols that you may find useful for product applications.

- [Western Blot](#)
- [Blocking Peptides](#)
- [Dot Blot](#)
- [Immunohistochemistry](#)
- [Immunofluorescence](#)
- [Immunoprecipitation](#)
- [Flow Cytometry](#)
- [Cell Culture](#)

Hand2 antibody - C-terminal region - Images**WB Suggested Anti-Hand2 Antibody**

Titration: 1. µg/ml

Positive Control: Mouse Heart



Host:Rabbit
Target Name:Hand2
Sample Tissue: Mouse Heart lysates
Antibody Dilution:1.µg/ml