

**Nfe2 Antibody - C-terminal region**  
**Rabbit Polyclonal Antibody**  
**Catalog # AI10212****Specification**

---

**Nfe2 Antibody - C-terminal region - Product Information**

Application	WB
Primary Accession	<a href="#">Q07279</a>
Other Accession	<a href="#">NM_008685</a> , <a href="#">NP_032711</a>
Reactivity	Human, Mouse, Rat, Horse, Bovine, Dog
Predicted	Human, Mouse, Rat, Pig, Bovine, Guinea Pig, Dog
Host	Rabbit
Clonality	Polyclonal
Calculated MW	41kDa KDa

**Nfe2 Antibody - C-terminal region - Additional Information****Gene ID** 18022

**Alias Symbol** 45kDa, NF-E2, p45, p45NFE2, p45nf-e2

**Other Names**  
Transcription factor NF-E2 45 kDa subunit, Leucine zipper protein NF-E2, Nuclear factor, erythroid-derived 2 45 kDa subunit, p45 NF-E2, Nfe2

**Format**

Liquid. Purified antibody supplied in 1x PBS buffer with 0.09% (w/v) sodium azide and 2% sucrose.

**Reconstitution & Storage**

Add 50 µl of distilled water. Final Anti-Nfe2 antibody concentration is 1 mg/ml in PBS buffer with 2% sucrose. For longer periods of storage, store at -20°C. Avoid repeat freeze-thaw cycles.

**Precautions**

Nfe2 Antibody - C-terminal region is for research use only and not for use in diagnostic or therapeutic procedures.

**Nfe2 Antibody - C-terminal region - Protein Information****Name** Nfe2**Function**

Component of the NF-E2 complex essential for regulating erythroid and megakaryocytic maturation and differentiation. Binds to the hypersensitive site 2 (HS2) of the beta-globin control region (LCR). This subunit (NFE2) recognizes the TCAT/C sequence of the AP-1- like core palindrome present in a number of erythroid and megakaryocytic gene promoters. Requires MAFK or other small MAF proteins for binding to the NF-E2 motif. May play a role in all aspects of hemoglobin production from globin and heme synthesis to procurement of iron.

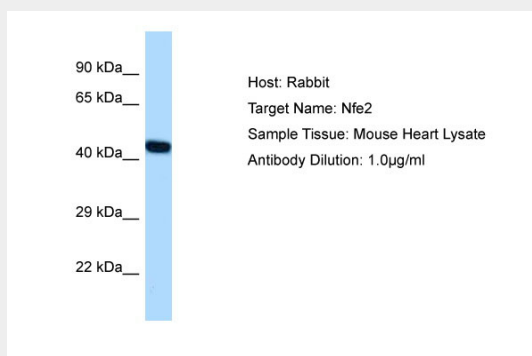
**Cellular Location**

Nucleus, PML body. Cytoplasm. Note=The sumoylated form locates to the nuclear bodies PML oncogenic domains (PODs). Translocated to the cytoplasm through interaction with ITCH (By similarity).

**Nfe2 Antibody - C-terminal region - Protocols**

Provided below are standard protocols that you may find useful for product applications.

- [Western Blot](#)
- [Blocking Peptides](#)
- [Dot Blot](#)
- [Immunohistochemistry](#)
- [Immunofluorescence](#)
- [Immunoprecipitation](#)
- [Flow Cytometry](#)
- [Cell Culture](#)

**Nfe2 Antibody - C-terminal region - Images**

**Host:**Rabbit

**Target Name:**Nfe2

**Sample Tissue:** Mouse Heart lysates

**Antibody Dilution:**1.µg/ml