

Avil antibody - N-terminal region
Rabbit Polyclonal Antibody
Catalog # AI10235**Specification**

Avil antibody - N-terminal region - Product Information

Application	WB
Primary Accession	O9WU06
Other Accession	NM_024401 , NP_077377
Reactivity	Human, Mouse, Rat, Zebrafish, Horse, Bovine, Dog
Predicted	Human, Mouse, Rat, Bovine, Guinea Pig, Dog
Host	Rabbit
Clonality	Polyclonal
Calculated MW	91kDa KDa

Avil antibody - N-terminal region - Additional Information**Gene ID** 79253**Other Names**

Advillin, Peripheral nervous system villin-like protein, Pervin, Avil, Advil

Format

Liquid. Purified antibody supplied in 1x PBS buffer with 0.09% (w/v) sodium azide and 2% sucrose.

Reconstitution & Storage

Add 50 ul of distilled water. Final anti-Avil antibody concentration is 1 mg/ml in PBS buffer with 2% sucrose. For longer periods of storage, store at 20°C. Avoid repeat freeze-thaw cycles.

Precautions

Avil antibody - N-terminal region is for research use only and not for use in diagnostic or therapeutic procedures.

Avil antibody - N-terminal region - Protein Information**Name** Avil {ECO:0000312|RGD:620301}**Function**

Ca(2+)-regulated actin-binding protein which plays an important role in actin bundling. May have a unique function in the morphogenesis of neuronal cells which form ganglia. Required for SREC1-mediated regulation of neurite-like outgrowth. Plays a role in regenerative sensory axon outgrowth and remodeling processes after peripheral injury in neonates (PubMed:11849295). Involved in the formation of long fine actin-containing filopodia-like structures in fibroblast. Plays a role in ciliogenesis. In podocytes, controls lamellipodia formation through the regulation of EGF-induced diacylglycerol generation by PLCE1 and ARP2/3 complex assembly (By similarity).

Cellular Location

Cytoplasm, cytoskeleton. Cell projection, neuron projection. Cell projection, axon. Cell projection, lamellipodium {ECO:0000250|UniProtKB:O75366}. Cell junction, focal adhesion {ECO:0000250|UniProtKB:O75366}. Note=In podocytes, present in the F- actin-enriched cell periphery that generates lamellipodia and focal adhesions. {ECO:0000250|UniProtKB:O75366}

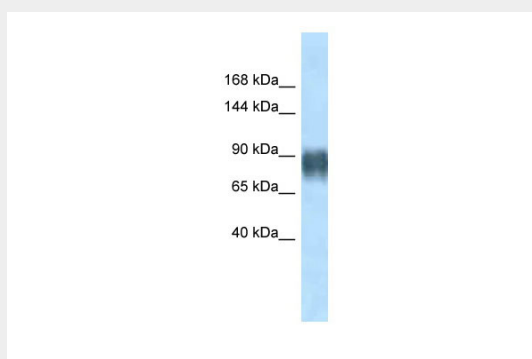
Tissue Location

Expressed in dorsal root ganglion (DRG) neurons and superior cervical ganglia (SCG) (PubMed:11849295). Expressed in podocytes (PubMed:29058690).

Avil antibody - N-terminal region - Protocols

Provided below are standard protocols that you may find useful for product applications.

- [Western Blot](#)
- [Blocking Peptides](#)
- [Dot Blot](#)
- [Immunohistochemistry](#)
- [Immunofluorescence](#)
- [Immunoprecipitation](#)
- [Flow Cytometry](#)
- [Cell Culture](#)

Avil antibody - N-terminal region - Images**WB Suggested Anti-Avil Antibody**

Titration: 1. µg/ml

Positive Control: Rat Muscle