

Rnf166 antibody - middle region
Rabbit Polyclonal Antibody
Catalog # AI10316**Specification**

Rnf166 antibody - middle region - Product Information

Application	WB
Primary Accession	Q3U9F6
Other Accession	NM_001033142 , NP_001028314
Reactivity	Human, Mouse, Rat, Zebrafish, Horse, Bovine, Dog
Predicted Host	Mouse, Chicken, Bovine, Dog
Clonality	Rabbit
Calculated MW	Polyclonal 26kDa KDa

Rnf166 antibody - middle region - Additional Information**Gene ID** 68718**Alias Symbol** 1110031E24Rik, AW555115, Zfp313I
Other Names
RING finger protein 166, Rnf166**Format**

Liquid. Purified antibody supplied in 1x PBS buffer with 0.09% (w/v) sodium azide and 2% sucrose.

Reconstitution & Storage

Add 50 ul of distilled water. Final anti-Rnf166 antibody concentration is 1 mg/ml in PBS buffer with 2% sucrose. For longer periods of storage, store at 20°C. Avoid repeat freeze-thaw cycles.

Precautions

Rnf166 antibody - middle region is for research use only and not for use in diagnostic or therapeutic procedures.

Rnf166 antibody - middle region - Protein Information**Name** Rnf166**Function**

E3 ubiquitin-protein ligase that promotes the ubiquitination of different substrates. In turn, participates in different biological processes including interferon production or autophagy. Plays a role in the activation of RNA virus-induced interferon-beta production by promoting the ubiquitination of TRAF3 and TRAF6. Also plays a role in the early recruitment of autophagy adaptors to bacteria. Mediates 'Lys- 29' and 'Lys-33'-linked ubiquitination of SQSTM1 leading to xenophagic targeting of bacteria and inhibition of their replication.

Cellular Location

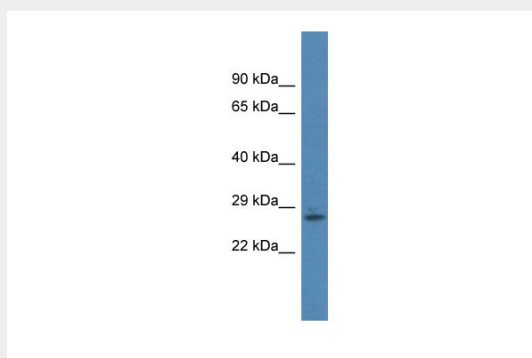
Cytoplasm {ECO:0000250|UniProtKB:Q96A37}.

Rnf166 antibody - middle region - Protocols

Provided below are standard protocols that you may find useful for product applications.

- [Western Blot](#)
- [Blocking Peptides](#)
- [Dot Blot](#)
- [Immunohistochemistry](#)
- [Immunofluorescence](#)
- [Immunoprecipitation](#)
- [Flow Cytometry](#)
- [Cell Culture](#)

Rnf166 antibody - middle region - Images



WB Suggested Anti-Rnf166 Antibody

Titration: 1. µg/ml

Positive Control: Mouse Pancreas