

Aes Antibody - N-terminal region
Rabbit Polyclonal Antibody
Catalog # AI10344**Specification**

Aes Antibody - N-terminal region - Product Information

Application	WB
Primary Accession	P63002
Other Accession	NM_010347 , NP_034477
Reactivity	Human, Mouse, Rat, Bovine
Predicted	Human, Mouse, Rat, Pig, Bovine, Guinea Pig
Host	Rabbit
Clonality	Polyclonal
Calculated MW	22kDa kDa

Aes Antibody - N-terminal region - Additional Information**Gene ID** 14797**Alias Symbol** AL024115, Grg, Grg5**Other Names**

Amino-terminal enhancer of split, Amino enhancer of split, Grg-5, Groucho-related protein 5, Protein ESP1, Protein GRG, Aes, Esp1, Grg, Grg5

Format

Liquid. Purified antibody supplied in 1x PBS buffer with 0.09% (w/v) sodium azide and 2% sucrose.

Reconstitution & Storage

Add 50 ul of distilled water. Final anti-Aes antibody concentration is 1 mg/ml in PBS buffer with 2% sucrose. For longer periods of storage, store at 20°C. Avoid repeat freeze-thaw cycles.

Precautions

Aes Antibody - N-terminal region is for research use only and not for use in diagnostic or therapeutic procedures.

Aes Antibody - N-terminal region - Protein Information**Name** Tle5 {ECO:0000305}**Function**

Transcriptional corepressor. Acts as a dominant repressor towards other family members. Inhibits NF-kappa-B-regulated gene expression. May be required for the initiation and maintenance of the differentiated state. Essential for the transcriptional repressor activity of SIX3 during retina and lens development.

Cellular Location

Nucleus.

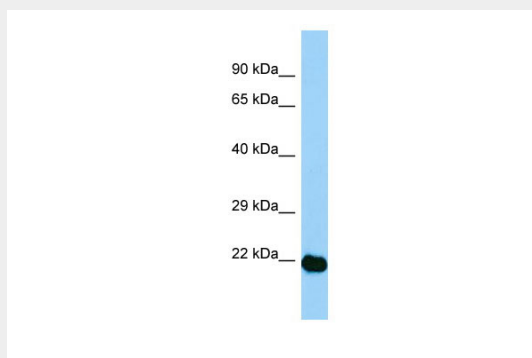
Tissue Location

Ubiquitously expressed in developing embryos by midgestation, a wide expression is conserved in adult. In mouse, abundantly expressed in muscle, heart and brain

Aes Antibody - N-terminal region - Protocols

Provided below are standard protocols that you may find useful for product applications.

- [Western Blot](#)
- [Blocking Peptides](#)
- [Dot Blot](#)
- [Immunohistochemistry](#)
- [Immunofluorescence](#)
- [Immunoprecipitation](#)
- [Flow Cytometry](#)
- [Cell Culture](#)

Aes Antibody - N-terminal region - Images**WB Suggested Anti-Aes Antibody**

Titration: 1. µg/ml

Positive Control: Mouse Stomach