

**Kcnip3 antibody - middle region**  
**Rabbit Polyclonal Antibody**  
**Catalog # AI10388****Specification**

---

**Kcnip3 antibody - middle region - Product Information**

Application	WB
Primary Accession	<a href="#">O9OXT8</a>
Other Accession	<a href="#">NM_001111331</a> , <a href="#">NP_001104801</a>
Reactivity	Human, Mouse, Rat, Zebrafish, Horse, Bovine, Dog
Predicted	Human, Mouse, Rat, Zebrafish, Pig, Bovine, Guinea Pig, Dog
Host	Rabbit
Clonality	Polyclonal
Calculated MW	26kDa KDa

**Kcnip3 antibody - middle region - Additional Information****Gene ID** 56461**Alias Symbol** 4933407H12Rik, AI413860, Csen, DREAM, KChIP3, R74849**Other Names**

Calsenilin, A-type potassium channel modulatory protein 3, DRE-antagonist modulator, DREAM, Kv channel-interacting protein 3, KChIP3, Kcnip3, Csen, Dream, Kchip3

**Format**

Liquid. Purified antibody supplied in 1x PBS buffer with 0.09% (w/v) sodium azide and 2% sucrose.

**Reconstitution & Storage**

Add 50 ul of distilled water. Final anti-Kcnip3 antibody concentration is 1 mg/ml in PBS buffer with 2% sucrose. For longer periods of storage, store at 20°C. Avoid repeat freeze-thaw cycles.

**Precautions**

Kcnip3 antibody - middle region is for research use only and not for use in diagnostic or therapeutic procedures.

**Kcnip3 antibody - middle region - Protein Information****Name** Kcnip3**Synonyms** Csen, Dream, Kchip3**Function**

Calcium-dependent transcriptional repressor that binds to the DRE element of genes including PDYN and FOS. Affinity for DNA is reduced upon binding to calcium and enhanced by binding to magnesium. Seems to be involved in nociception.

**Cellular Location**

Cytoplasm. Cell membrane {ECO:0000250|UniProtKB:Q9Y2W7}; Lipid-anchor. Endoplasmic reticulum {ECO:0000250|UniProtKB:Q9Y2W7}. Golgi apparatus {ECO:0000250|UniProtKB:Q9Y2W7}. Nucleus {ECO:0000250|UniProtKB:Q9Y2W7} Note=The sumoylated form is present only in the nucleus. In the presence of PSEN2, associated with the endoplasmic reticulum and Golgi {ECO:0000250|UniProtKB:Q9Y2W7}

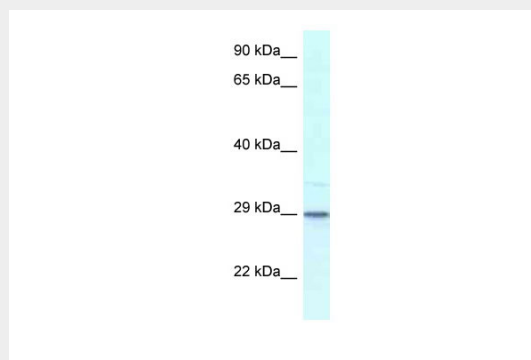
**Tissue Location**

Highly expressed in brain. Isoform 1 or isoform 4 (T+ forms) are expressed at equal levels with isoform 2 or isoform 3 (T- forms). Primarily detected in the layer V and deep layer VI of the cerebral cortex, the hippocampus, and the entire cerebellum. Expressed at low levels in testis. Also expressed in heart

**Kcnp3 antibody - middle region - Protocols**

Provided below are standard protocols that you may find useful for product applications.

- [Western Blot](#)
- [Blocking Peptides](#)
- [Dot Blot](#)
- [Immunohistochemistry](#)
- [Immunofluorescence](#)
- [Immunoprecipitation](#)
- [Flow Cytometry](#)
- [Cell Culture](#)

**Kcnp3 antibody - middle region - Images****WB Suggested Anti-Kcnp3 Antibody**

**Titration: 1. µg/ml**

Positive Control: Mouse Pancreas