

Smad6 Antibody - C-terminal region
Rabbit Polyclonal Antibody
Catalog # AI10402**Specification**

Smad6 Antibody - C-terminal region - Product Information

| | |
|-------------------|--|
| Application | WB |
| Primary Accession | O35182 |
| Reactivity | Human, Mouse, Rat, Zebrafish, Pig, Horse, Bovine, Dog |
| Predicted | Human, Mouse, Rat, Zebrafish, Pig, Bovine, Guinea Pig, Dog |
| Host | Rabbit |
| Clonality | Polyclonal |
| Calculated MW | 54kDa kDa |

Smad6 Antibody - C-terminal region - Additional Information**Gene ID** 17130**Other Names**

Mothers against decapentaplegic homolog 6, MAD homolog 6, Mothers against DPP homolog 6, Mad homolog 7, SMAD family member 6, SMAD 6, Smad6, Smad6, Madh6, Madh7, Msmad6

Format

Liquid. Purified antibody supplied in 1x PBS buffer with 0.09% (w/v) sodium azide and 2% sucrose.

Reconstitution & Storage

Add 50 µl of distilled water. Final Anti-Smad6 antibody concentration is 1 mg/ml in PBS buffer with 2% sucrose. For longer periods of storage, store at -20°C. Avoid repeat freeze-thaw cycles.

Precautions

Smad6 Antibody - C-terminal region is for research use only and not for use in diagnostic or therapeutic procedures.

Smad6 Antibody - C-terminal region - Protein Information**Name** Smad6**Synonyms** Madh6, Madh7, Msmad6**Function**

Transforming growth factor-beta superfamily receptors signaling occurs through the Smad family of intracellular mediators. SMAD6 is an inhibitory Smad (i-Smad) that negatively regulates signaling downstream of type I transforming growth factor-beta (By similarity). Acts as a mediator of TGF-beta and BMP anti-inflammatory activities. Suppresses IL1R-TLR signaling through its direct interaction with PEL1, preventing NF-kappa-B activation, nuclear transport and NF-kappa-B-mediated expression of pro-inflammatory genes (PubMed:16951688). Blocks the BMP-SMAD1 signaling pathway by competing with SMAD4 for receptor-activated SMAD1-binding. Binds to regulatory elements in target promoter regions (By similarity).

Cellular Location

Nucleus.

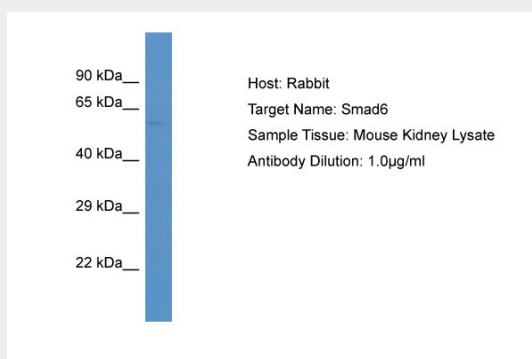
Tissue Location

Ubiquitous in various organs, with higher levels in lung

Smad6 Antibody - C-terminal region - Protocols

Provided below are standard protocols that you may find useful for product applications.

- [Western Blot](#)
- [Blocking Peptides](#)
- [Dot Blot](#)
- [Immunohistochemistry](#)
- [Immunofluorescence](#)
- [Immunoprecipitation](#)
- [Flow Cytometry](#)
- [Cell Culture](#)

Smad6 Antibody - C-terminal region - Images

Host:Rabbit

Target Name:Smad6

Sample Tissue: Mouse Kidney lysates

Antibody Dilution:1.µg/ml