

Hes6 Antibody - middle region
Rabbit Polyclonal Antibody
Catalog # AI10435**Specification**

Hes6 Antibody - middle region - Product Information

Application	WB
Primary Accession	O9JHE6
Other Accession	NM_019479 , NP_062352
Reactivity	Human, Mouse, Rat, Zebrafish, Pig, Horse, Bovine, Dog
Predicted	Human, Mouse, Rat, Zebrafish, Pig, Bovine, Guinea Pig, Dog
Host	Rabbit
Clonality	Polyclonal
Calculated MW	24kDa KDa

Hes6 Antibody - middle region - Additional Information**Gene ID** 55927**Alias Symbol** AI326893, bHLHb41**Other Names**Transcription cofactor HES-6, Hairy and enhancer of split 6, Hes6
{ECO:0000312|EMBL:BAA96081.1}**Format**

Liquid. Purified antibody supplied in 1x PBS buffer with 0.09% (w/v) sodium azide and 2% sucrose.

Reconstitution & Storage

Add 50 ul of distilled water. Final anti-Hes6 antibody concentration is 1 mg/ml in PBS buffer with 2% sucrose. For longer periods of storage, store at 20°C. Avoid repeat freeze-thaw cycles.

Precautions

Hes6 Antibody - middle region is for research use only and not for use in diagnostic or therapeutic procedures.

Hes6 Antibody - middle region - Protein Information**Name** Hes6 {ECO:0000312|EMBL:BAA96081.1}**Function**

Does not bind DNA itself but suppresses both HES1-mediated N box-dependent transcriptional repression and binding of HES1 to E box sequences. Also suppresses HES1-mediated inhibition of the heterodimer formed by ASCL1/MASH1 and TCF3/E47, allowing ASCL1 and TCF3 to up- regulate transcription in its presence. Promotes cell differentiation.

Cellular Location

Nucleus.

Tissue Location

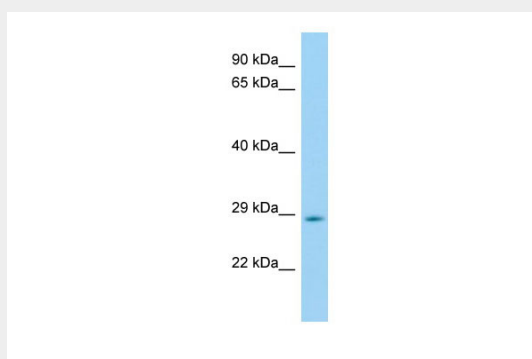
Expressed in both undifferentiated and differentiated cells. High levels of expression are observed in several embryonic tissues including the nervous system, muscle and thymus. In the nervous system, initially expressed in the closing neural tube, then in the spinal cord, cranial and dorsal root ganglia, and brain neuroepithelium. Also expressed in epithelial cells of the embryonic respiratory, urinary and digestive systems. In the limb buds, expressed in skeletal muscle and presumptive tendons

Hes6 Antibody - middle region - Protocols

Provided below are standard protocols that you may find useful for product applications.

- [Western Blot](#)
- [Blocking Peptides](#)
- [Dot Blot](#)
- [Immunohistochemistry](#)
- [Immunofluorescence](#)
- [Immunoprecipitation](#)
- [Flow Cytometry](#)
- [Cell Culture](#)

Hes6 Antibody - middle region - Images



WB Suggested Anti-Hes6 Antibody

Titration: 1. µg/ml

Positive Control: Mouse Stomach