

Ccnl1 antibody - N-terminal region
Rabbit Polyclonal Antibody
Catalog # AI10474**Specification**

Ccnl1 antibody - N-terminal region - Product Information

Application	WB
Primary Accession	O9R1Q2
Other Accession	NM_053662 , NP_446114
Reactivity	Human, Mouse, Rat, Zebrafish, Bovine, Dog
Predicted	Human, Mouse, Rat, Zebrafish, Chicken, Bovine, Guinea Pig, Dog
Host	Rabbit
Clonality	Polyclonal
Calculated MW	57kDa KDa

Ccnl1 antibody - N-terminal region - Additional Information**Gene ID** 114121**Alias Symbol** **Ania-6a, Ccnl|MGC93069, Ccnl**
Other Names
Cyclin-L1, Cyclin-L, Cyclin Ania-6a, Ccnl1, Ania6a**Format**

Liquid. Purified antibody supplied in 1x PBS buffer with 0.09% (w/v) sodium azide and 2% sucrose.

Reconstitution & Storage

Add 50 ul of distilled water. Final anti-Ccnl1 antibody concentration is 1 mg/ml in PBS buffer with 2% sucrose. For longer periods of storage, store at 20°C. Avoid repeat freeze-thaw cycles.

Precautions

Ccnl1 antibody - N-terminal region is for research use only and not for use in diagnostic or therapeutic procedures.

Ccnl1 antibody - N-terminal region - Protein Information**Name** Ccnl1**Synonyms** Ania6a**Function**

Involved in pre-mRNA splicing (PubMed:11683997). Functions in association with cyclin-dependent kinases (CDKs). May play a role in the regulation of RNA polymerase II (pol II). Inhibited by the CDK- specific inhibitor CDKN1A/p21 (By similarity).

Cellular Location

Nucleus speckle. Nucleus, nucleoplasm {ECO:0000250|UniProtKB:Q9UK58}. Note=Found in nuclear intrachromatin granules clusters (IGC), also called nuclear speckles, which are storage compartments for nuclear proteins involved in mRNA processing

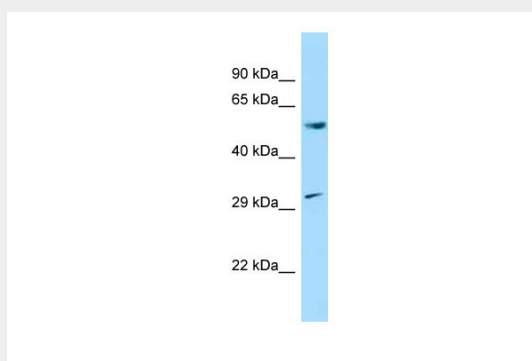
Tissue Location

Ubiquitous with higher level in liver; expressed in striatal neurons.

Ccnl1 antibody - N-terminal region - Protocols

Provided below are standard protocols that you may find useful for product applications.

- [Western Blot](#)
- [Blocking Peptides](#)
- [Dot Blot](#)
- [Immunohistochemistry](#)
- [Immunofluorescence](#)
- [Immunoprecipitation](#)
- [Flow Cytometry](#)
- [Cell Culture](#)

Ccnl1 antibody - N-terminal region - Images**WB Suggested Anti-Ccnl1 Antibody**

Titration: 1. µg/ml

Positive Control: Rat Brain