

Tollip antibody - N-terminal region
Rabbit Polyclonal Antibody
Catalog # AI10484**Specification**

Tollip antibody - N-terminal region - Product Information

Application	WB
Primary Accession	O9OZ06
Other Accession	NM_023764 , NP_076253
Reactivity	Human, Mouse, Rat, Zebrafish, Horse, Bovine, Dog
Predicted	Human, Mouse, Rat, Zebrafish, Pig, Chicken, Guinea Pig, Dog
Host	Rabbit
Clonality	Polyclonal
Calculated MW	30kDa KDa

Tollip antibody - N-terminal region - Additional Information**Gene ID** 54473**Alias Symbol** 4930403G24Rik, 4931428G15Rik
Other Names
Toll-interacting protein, Tollip**Format**

Liquid. Purified antibody supplied in 1x PBS buffer with 0.09% (w/v) sodium azide and 2% sucrose.

Reconstitution & Storage

Add 50 ul of distilled water. Final anti-Tollip antibody concentration is 1 mg/ml in PBS buffer with 2% sucrose. For longer periods of storage, store at 20°C. Avoid repeat freeze-thaw cycles.

Precautions

Tollip antibody - N-terminal region is for research use only and not for use in diagnostic or therapeutic procedures.

Tollip antibody - N-terminal region - Protein Information**Name** Tollip**Function**

Component of the signaling pathway of IL-1 and Toll-like receptors (By similarity). Inhibits cell activation by microbial products (By similarity). Recruits IRAK1 to the IL-1 receptor complex (By similarity). Inhibits IRAK1 phosphorylation and kinase activity. Connects the ubiquitin pathway to autophagy by functioning as a ubiquitin-ATG8 family adapter and thus mediating autophagic clearance of ubiquitin conjugates (By similarity). The TOLLIP-dependent selective autophagy pathway plays an important role in clearance of cytotoxic polyQ proteins aggregates (By similarity). In a complex with TOM1, recruits ubiquitin-conjugated proteins onto early endosomes

(By similarity). Binds to phosphatidylinositol 3-phosphate (PtdIns(3)P) (By similarity).

Cellular Location

Cytoplasm {ECO:0000250|UniProtKB:Q9H0E2}. Endosome {ECO:0000250|UniProtKB:Q9H0E2}. Early endosome {ECO:0000250|UniProtKB:Q9H0E2}. Note=Localized to endo/exosomal vesicles. {ECO:0000250|UniProtKB:Q9H0E2}

Tissue Location

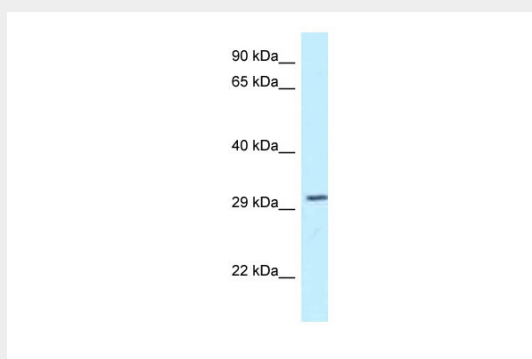
Detected in heart, brain, spleen, lung, liver, skeletal muscle, kidney, thymus, pancreas and testis

Tollip antibody - N-terminal region - Protocols

Provided below are standard protocols that you may find useful for product applications.

- [Western Blot](#)
- [Blocking Peptides](#)
- [Dot Blot](#)
- [Immunohistochemistry](#)
- [Immunofluorescence](#)
- [Immunoprecipitation](#)
- [Flow Cytometry](#)
- [Cell Culture](#)

Tollip antibody - N-terminal region - Images



WB Suggested Anti-Tollip Antibody

Titration: 1. µg/ml

Positive Control: Mouse Brain