

Mafg Antibody - N-terminal region
Rabbit Polyclonal Antibody
Catalog # AI10652**Specification**

Mafg Antibody - N-terminal region - Product Information

Application	WB
Primary Accession	O54790
Other Accession	NM_010756 , NP_034886
Reactivity	Human, Mouse, Rat, Zebrafish, Horse, Bovine, Dog
Predicted	Human, Mouse, Rat, Zebrafish, Pig, Horse, Bovine, Dog
Host	Rabbit
Clonality	Polyclonal
Calculated MW	18kDa KDa

Mafg Antibody - N-terminal region - Additional Information**Gene ID** 17134**Alias Symbol** AA545192, C630022N07Rik**Other Names**

Transcription factor MafG, V-maf musculoaponeurotic fibrosarcoma oncogene homolog G, Mafg

Format

Liquid. Purified antibody supplied in 1x PBS buffer with 0.09% (w/v) sodium azide and 2% sucrose.

Reconstitution & Storage

Add 50 ul of distilled water. Final anti-Mafg antibody concentration is 1 mg/ml in PBS buffer with 2% sucrose. For longer periods of storage, store at 20°C. Avoid repeat freeze-thaw cycles.

Precautions

Mafg Antibody - N-terminal region is for research use only and not for use in diagnostic or therapeutic procedures.

Mafg Antibody - N-terminal region - Protein Information**Name** Mafg**Function**

Since they lack a putative transactivation domain, the small Mafs behave as transcriptional repressors when they dimerize among themselves (PubMed:16738329, PubMed:9679061). However, they seem to serve as transcriptional activators by dimerizing with other (usually larger) basic-zipper proteins, such as NFE2, NFE2L1 and NFE2L2, and recruiting them to specific DNA-binding sites (PubMed:16738329),

PubMed:9679061). Small Maf proteins heterodimerize with Fos and may act as competitive repressors of the NFE2L2 transcription factor. Transcription factor, component of erythroid-specific transcription factor NFE2L2. Activates globin gene expression when associated with NFE2L2 (By similarity). May be involved in signal transduction of extracellular H(+) (By similarity).

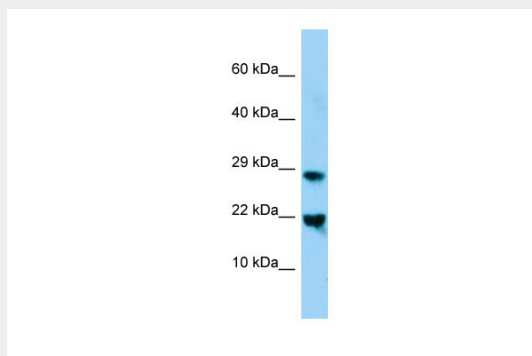
Cellular Location

Nucleus {ECO:0000250|UniProtKB:O15525, ECO:0000255|PROSITE-ProRule:PRU00978}

Mafg Antibody - N-terminal region - Protocols

Provided below are standard protocols that you may find useful for product applications.

- [Western Blot](#)
- [Blocking Peptides](#)
- [Dot Blot](#)
- [Immunohistochemistry](#)
- [Immunofluorescence](#)
- [Immunoprecipitation](#)
- [Flow Cytometry](#)
- [Cell Culture](#)

Mafg Antibody - N-terminal region - Images

WB Suggested Anti-Mafg Antibody Titration: 1.0 µg/ml
Positive Control: Mouse Muscle