

Crem Antibody - C-terminal region
Rabbit Polyclonal Antibody
Catalog # AI10729**Specification**

Crem Antibody - C-terminal region - Product Information

Application	WB
Primary Accession	Q03061
Other Accession	NM_001110860 , NP_001104330
Reactivity	Human, Mouse, Rat, Rabbit, Zebrafish, Pig, Sheep, Horse, Bovine, Dog
Predicted	Human, Mouse, Rat, Rabbit, Zebrafish, Pig, Sheep, Horse, Bovine, Dog
Host	Rabbit
Clonality	Polyclonal
Calculated MW	39kDa KDa

Crem Antibody - C-terminal region - Additional Information**Gene ID** 25620

Alias Symbol	Icer
Other Names	
cAMP-responsive element modulator, Crem	

Format

Liquid. Purified antibody supplied in 1x PBS buffer with 0.09% (w/v) sodium azide and 2% sucrose.

Reconstitution & Storage

Add 50 ul of distilled water. Final anti-Crem antibody concentration is 1 mg/ml in PBS buffer with 2% sucrose. For longer periods of storage, store at 20°C. Avoid repeat freeze-thaw cycles.

Precautions

Crem Antibody - C-terminal region is for research use only and not for use in diagnostic or therapeutic procedures.

Crem Antibody - C-terminal region - Protein Information**Name** Crem**Function**

Transcriptional regulator that binds the cAMP response element (CRE), a sequence present in many viral and cellular promoters. Isoforms are either transcriptional activators or repressors. Isoform Delta is an activator. Plays a role in spermatogenesis and is involved in spermatid maturation. Binding of isoform Tau (activator) to CRE is increased by CREB3L4. The CREM isoform Tau-CREB3L4 heterodimer functions through CRE and may recruit HIRA to CRE to regulate histone exchange (By similarity).

Cellular Location

Nucleus.

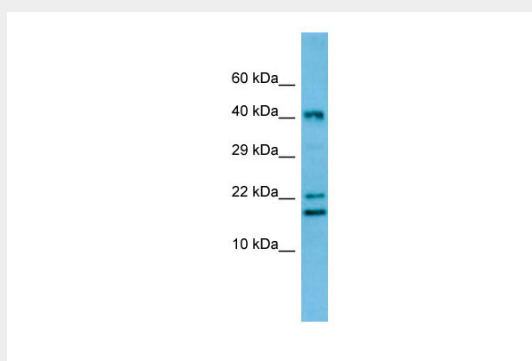
Tissue Location

Isoform Tau is expressed in testis germ cells. CREM-theta1- and CREM-theta2-containing isoforms are expressed in testis.

Crem Antibody - C-terminal region - Protocols

Provided below are standard protocols that you may find useful for product applications.

- [Western Blot](#)
- [Blocking Peptides](#)
- [Dot Blot](#)
- [Immunohistochemistry](#)
- [Immunofluorescence](#)
- [Immunoprecipitation](#)
- [Flow Cytometry](#)
- [Cell Culture](#)

Crem Antibody - C-terminal region - Images

WB Suggested Anti-Crem Antibody Titration: 1.0 µg/ml
Positive Control: Rat Thymus