

CLIC2 antibody - C-terminal region
Rabbit Polyclonal Antibody
Catalog # AI10779**Specification**

CLIC2 antibody - C-terminal region - Product Information

Application	WB
Primary Accession	O15247
Other Accession	NM_001289 , NP_001280
Reactivity	Human, Mouse, Rat, Rabbit, Pig, Horse, Bovine, Dog
Predicted	Human, Rat, Rabbit, Pig, Chicken, Bovine, Dog
Host	Rabbit
Clonality	Polyclonal
Calculated MW	27kDa KDa

CLIC2 antibody - C-terminal region - Additional Information**Gene ID** 1193

Alias Symbol	CLIC2b, XAP121
Other Names	
Chloride intracellular channel protein 2, XAP121, CLIC2	

Format

Liquid. Purified antibody supplied in 1x PBS buffer with 0.09% (w/v) sodium azide and 2% sucrose.

Reconstitution & Storage

Add 100 ul of distilled water. Final anti-CLIC2 antibody concentration is 1 mg/ml in PBS buffer with 2% sucrose. For longer periods of storage, store at 20°C. Avoid repeat freeze-thaw cycles.

Precautions

CLIC2 antibody - C-terminal region is for research use only and not for use in diagnostic or therapeutic procedures.

CLIC2 antibody - C-terminal region - Protein Information**Name** CLIC2**Function**

Can insert into membranes and form chloride ion channels. Channel activity depends on the pH. Membrane insertion seems to be redox-regulated and may occur only under oxydizing conditions. Modulates the activity of RYR2 and inhibits calcium influx.

Cellular Location

Cytoplasm. Membrane; Single-pass membrane protein. Note=Exists both as soluble cytoplasmic protein and as membrane protein with probably a single transmembrane domain

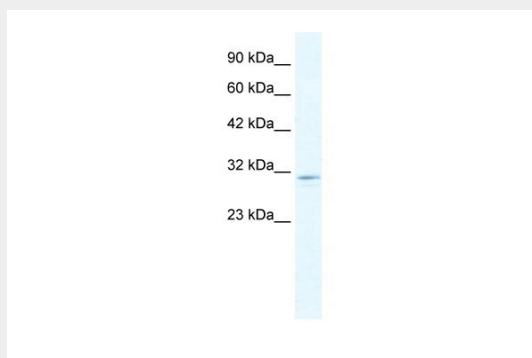
Tissue Location

Expressed in adult and fetal brain, heart, skeletal muscle, liver, lung, and spleen. Detected in adult stomach and testis Expressed in fetal thymus and kidney.

CLIC2 antibody - C-terminal region - Protocols

Provided below are standard protocols that you may find useful for product applications.

- [Western Blot](#)
- [Blocking Peptides](#)
- [Dot Blot](#)
- [Immunohistochemistry](#)
- [Immunofluorescence](#)
- [Immunoprecipitation](#)
- [Flow Cytometry](#)
- [Cell Culture](#)

CLIC2 antibody - C-terminal region - Images

WB Suggested Anti-CLIC2 Antibody Titration: 1.25 μ g/ml

ELISA Titer: 1:312500

Positive Control: HepG2 cell lysate

CLIC2 antibody - C-terminal region - References

Fan, L., et al., (2003) FEBS Lett. 540 (1-3), 77-80
Reconstitution and Storage: For short term use, store at 2-8C up to 1 week. For long term storage, store at -20C in small aliquots to prevent freeze-thaw cycles.