

CLIC2 antibody - middle region
Rabbit Polyclonal Antibody
Catalog # AI10780**Specification**

CLIC2 antibody - middle region - Product Information

Application	WB
Primary Accession	O15247
Other Accession	NM_001289 , NP_001280
Reactivity	Human, Rat, Rabbit, Horse, Bovine, Dog
Predicted	Human, Rat, Rabbit, Pig, Bovine, Dog
Host	Rabbit
Clonality	Polyclonal
Calculated MW	27kDa KDa

CLIC2 antibody - middle region - Additional Information**Gene ID** 1193**Alias Symbol** CLIC2b, XAP121**Other Names**

Chloride intracellular channel protein 2, XAP121, CLIC2

Format

Liquid. Purified antibody supplied in 1x PBS buffer with 0.09% (w/v) sodium azide and 2% sucrose.

Reconstitution & Storage

Add 100 ul of distilled water. Final anti-CLIC2 antibody concentration is 1 mg/ml in PBS buffer with 2% sucrose. For longer periods of storage, store at 20°C. Avoid repeat freeze-thaw cycles.

Precautions

CLIC2 antibody - middle region is for research use only and not for use in diagnostic or therapeutic procedures.

CLIC2 antibody - middle region - Protein Information**Name** CLIC2 {ECO:0000303|PubMed:9339381, ECO:0000312|HGNC:HGNC:2063}**Function**

In the soluble state, catalyzes glutaredoxin-like thiol disulfide exchange reactions with reduced glutathione as electron donor. Displays weak glutathione peroxidase activity (Probable) (PubMed:25581026).

Can insert into membranes and form chloride ion channels. Membrane insertion seems to be redox-regulated and may occur only under oxidizing conditions. Modulates the activity of RYR2 and inhibits calcium influx.

Cellular Location

Cytoplasm. Membrane; Single-pass membrane protein. Note=Exists both as soluble cytoplasmic

protein and as membrane protein with probably a single transmembrane domain

Tissue Location

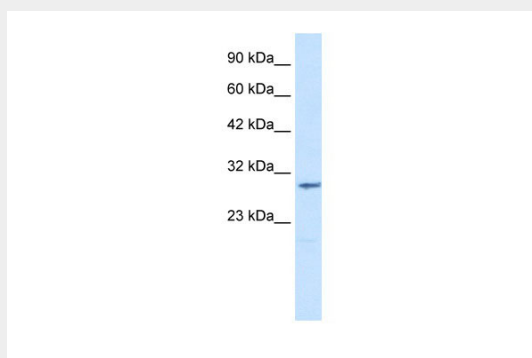
Expressed in adult and fetal brain, heart, skeletal muscle, liver, lung, and spleen. Detected in adult stomach and testis Expressed in fetal thymus and kidney.

CLIC2 antibody - middle region - Protocols

Provided below are standard protocols that you may find useful for product applications.

- [Western Blot](#)
- [Blocking Peptides](#)
- [Dot Blot](#)
- [Immunohistochemistry](#)
- [Immunofluorescence](#)
- [Immunoprecipitation](#)
- [Flow Cytometry](#)
- [Cell Culture](#)

CLIC2 antibody - middle region - Images



WB Suggested Anti-CLIC2 Antibody Titration: 1.25 μ g/ml

ELISA Titer: 1:62500

Positive Control: Jurkat cell lysate

CLIC2 antibody - middle region - References

Fan,L., et al., (2003) FEBS Lett. 540 (1-3), 77-80
Reconstitution and Storage:For short term use, store at 2-8C up to 1 week. For long term storage, store at -20C in small aliquots to prevent freeze-thaw cycles.