

**KCNG1 antibody - N-terminal region**  
**Rabbit Polyclonal Antibody**  
**Catalog # AI10783****Specification**

---

**KCNG1 antibody - N-terminal region - Product Information**

Application	WB
Primary Accession	<a href="#">O9UIX4</a>
Other Accession	<a href="#">NM_002237</a> , <a href="#">NP_002228</a>
Reactivity	Human, Mouse, Rat, Rabbit, Pig, Horse, Bovine, Dog
Predicted	Human, Rat, Pig, Horse
Host	Rabbit
Clonality	Polyclonal
Calculated MW	56kDa kDa

**KCNG1 antibody - N-terminal region - Additional Information****Gene ID** 3755**Alias Symbol** **K13, KCNG, KV6.1, MGC12878, kH2**  
**Other Names**

Potassium voltage-gated channel subfamily G member 1, Voltage-gated potassium channel subunit Kv6.1, kH2, KCNG1

**Format**

Liquid. Purified antibody supplied in 1x PBS buffer with 0.09% (w/v) sodium azide and 2% sucrose.

**Reconstitution & Storage**

Add 50 ul of distilled water. Final anti-KCNG1 antibody concentration is 1 mg/ml in PBS buffer with 2% sucrose. For longer periods of storage, store at 20°C. Avoid repeat freeze-thaw cycles.

**Precautions**

KCNG1 antibody - N-terminal region is for research use only and not for use in diagnostic or therapeutic procedures.

**KCNG1 antibody - N-terminal region - Protein Information****Name** KCNG1 ([HGNC:6248](#))**Function**

Regulatory alpha-subunit of the voltage-gated potassium (Kv) channel which, when coassembled with KCNB1 or KCNB2, can modulate their expression and their gating kinetics by acting on deactivation upon repolarization and inactivation during maintained depolarization (PubMed:&lt;a href="http://www.uniprot.org/citations/19074135" target="\_blank"&gt;19074135&lt;/a&gt;). Potassium channel subunit that does not form functional channels by itself (PubMed:&lt;a href="http://www.uniprot.org/citations/19074135" target="\_blank"&gt;19074135&lt;/a&gt;).

**Cellular Location**

Cell membrane {ECO:0000250|UniProtKB:Q14721}; Multi-pass membrane protein.

Note=Colocalizes with KCNB1 at the plasma membrane. {ECO:0000250|UniProtKB:Q14721}

**Tissue Location**

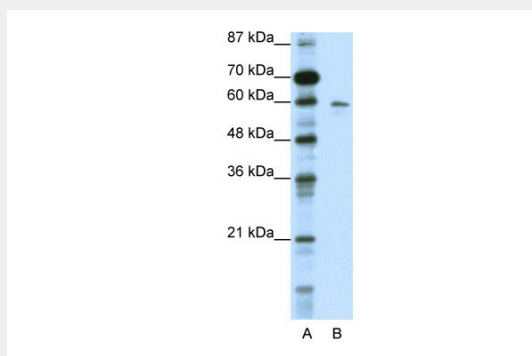
Expressed in brain and placenta, and at much lower levels in kidney and pancreas

(PubMed:9434767)

**KCNG1 antibody - N-terminal region - Protocols**

Provided below are standard protocols that you may find useful for product applications.

- [Western Blot](#)
- [Blocking Peptides](#)
- [Dot Blot](#)
- [Immunohistochemistry](#)
- [Immunofluorescence](#)
- [Immunoprecipitation](#)
- [Flow Cytometry](#)
- [Cell Culture](#)

**KCNG1 antibody - N-terminal region - Images**

WB Suggested Anti-KCNG1 Antibody Titration: 0.2-1  $\mu$ g/ml

ELISA Titer: 1:62500

Positive Control: HepG2 cell lysate

**KCNG1 antibody - N-terminal region - References**

Su,K., et al., (1997) Biochem. Biophys. Res. Commun. 241 (3), 675-681  
Reconstitution and Storage: For short term use, store at 2-8C up to 1 week. For long term storage, store at -20C in small aliquots to prevent freeze-thaw cycles.