

Kcnj3 antibody - C-terminal region
Rabbit Polyclonal Antibody
Catalog # AI10784**Specification**

Kcnj3 antibody - C-terminal region - Product Information

Application	WB
Primary Accession	P63250
Other Accession	NM_008426 , NP_032452
Reactivity	Human, Mouse, Rat, Rabbit, Pig, Horse, Bovine, Dog
Predicted Host	Mouse, Rat, Pig, Chicken
Clonality	Rabbit
Calculated MW	Polyclonal 56kDa KDa

Kcnj3 antibody - C-terminal region - Additional Information**Gene ID** 16519**Alias Symbol** GIRK1, Kcnf3, Kir3.1, MGC124233, MGC124234**Other Names**

G protein-activated inward rectifier potassium channel 1, GIRK-1, Inward rectifier K(+) channel Kir3.1, Potassium channel, inwardly rectifying subfamily J member 3, Kcnj3, Girk1

Format

Liquid. Purified antibody supplied in 1x PBS buffer with 0.09% (w/v) sodium azide and 2% sucrose.

Reconstitution & Storage

Add 50 ul of distilled water. Final anti-Kcnj3 antibody concentration is 1 mg/ml in PBS buffer with 2% sucrose. For longer periods of storage, store at 20°C. Avoid repeat freeze-thaw cycles.

Precautions

Kcnj3 antibody - C-terminal region is for research use only and not for use in diagnostic or therapeutic procedures.

Kcnj3 antibody - C-terminal region - Protein Information**Name** Kcnj3**Synonyms** Girk1**Function**

This potassium channel is controlled by G proteins. Inward rectifier potassium channels are characterized by a greater tendency to allow potassium to flow into the cell rather than out of it. Their voltage dependence is regulated by the concentration of extracellular potassium; as external potassium is raised, the voltage range of the channel opening shifts to more positive voltages. The

inward rectification is mainly due to the blockage of outward current by internal magnesium. This receptor plays a crucial role in regulating the heartbeat.

Cellular Location

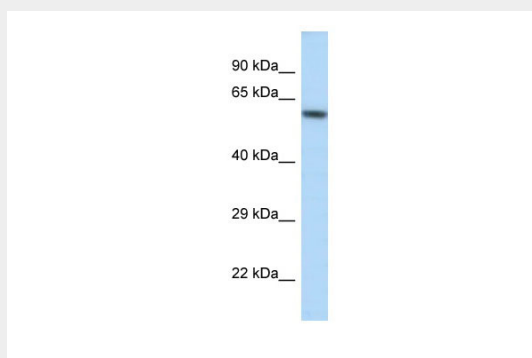
Membrane; Multi-pass membrane protein.

Kcnj3 antibody - C-terminal region - Protocols

Provided below are standard protocols that you may find useful for product applications.

- [Western Blot](#)
- [Blocking Peptides](#)
- [Dot Blot](#)
- [Immunohistochemistry](#)
- [Immunofluorescence](#)
- [Immunoprecipitation](#)
- [Flow Cytometry](#)
- [Cell Culture](#)

Kcnj3 antibody - C-terminal region - Images



WB Suggested Anti-Kcnj3 Antibody Titration: 1.0 µg/ml
Positive Control: Mouse Kidney