

KCNS1 antibody - N-terminal region
Rabbit Polyclonal Antibody
Catalog # AI10790**Specification**

KCNS1 antibody - N-terminal region - Product Information

Application	WB
Primary Accession	O96KK3
Other Accession	NM_002251 , NP_002242
Reactivity	Human
Predicted	Human
Host	Rabbit
Clonality	Polyclonal
Calculated MW	58kDa KDa

KCNS1 antibody - N-terminal region - Additional Information**Gene ID** 3787**Alias Symbol** **KV9.1****Other Names**

Potassium voltage-gated channel subfamily S member 1, Delayed-rectifier K(+) channel alpha subunit 1, Voltage-gated potassium channel subunit Kv9.1, KCNS1

Format

Liquid. Purified antibody supplied in 1x PBS buffer with 0.09% (w/v) sodium azide and 2% sucrose.

Reconstitution & Storage

Add 50 ul of distilled water. Final anti-KCNS1 antibody concentration is 1 mg/ml in PBS buffer with 2% sucrose. For longer periods of storage, store at 20°C. Avoid repeat freeze-thaw cycles.

Precautions

KCNS1 antibody - N-terminal region is for research use only and not for use in diagnostic or therapeutic procedures.

KCNS1 antibody - N-terminal region - Protein Information**Name** KCNS1 ([HGNC:6300](#))**Function**

Potassium channel regulatory subunit that modulate the delayed rectifier voltage-gated potassium channel activity of KCNB1 and KCNB2 by altering their kinetics, expression levels, and shifting the half-inactivation potential to more polarized values (PubMed:10484328). While it does not form functional channels on its own, it can form functional heterotetrameric channels with KCNB1 and KCNB2 (PubMed:10484328). Each regulatory subunit has unique regulatory properties that can lead to extensive inhibition, significant changes in kinetics, and/or substantial shifts in the

voltage dependencies of the inactivation process (By similarity).

Cellular Location

Cell membrane; Multi-pass membrane protein. Note=May not reach the plasma membrane but remain in an intracellular compartment in the absence of KCNB1 or KCNB2 (PubMed:10484328)

Tissue Location

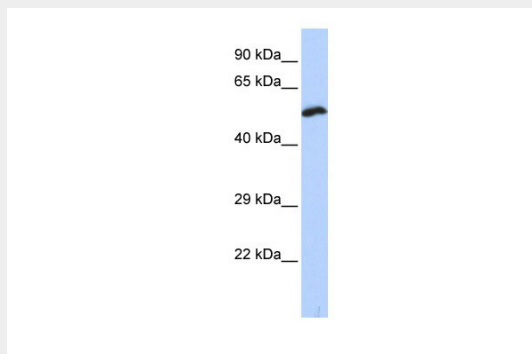
Detected in all tissues tested with the exception of skeletal muscle (PubMed:10484328). Highly expressed in adult and fetal brain, fetal kidney and lung, and adult prostate and testis (PubMed:10484328).

KCNS1 antibody - N-terminal region - Protocols

Provided below are standard protocols that you may find useful for product applications.

- [Western Blot](#)
- [Blocking Peptides](#)
- [Dot Blot](#)
- [Immunohistochemistry](#)
- [Immunofluorescence](#)
- [Immunoprecipitation](#)
- [Flow Cytometry](#)
- [Cell Culture](#)

KCNS1 antibody - N-terminal region - Images



WB Suggested Anti-KCNS1 Antibody Titration: 0.2-1 µg/ml

ELISA Titer: 1:1562500

Positive Control: Hela cell lysate

KCNS1 antibody - N-terminal region - References

Gutman, G.A., (2005) Pharmacol. Rev. 57 (4), 473-508 Reconstitution and Storage: For short term use, store at 2-8°C up to 1 week. For long term storage, store at -20°C in small aliquots to prevent freeze-thaw cycles.